



Twickenham Road, TW7

£339,950

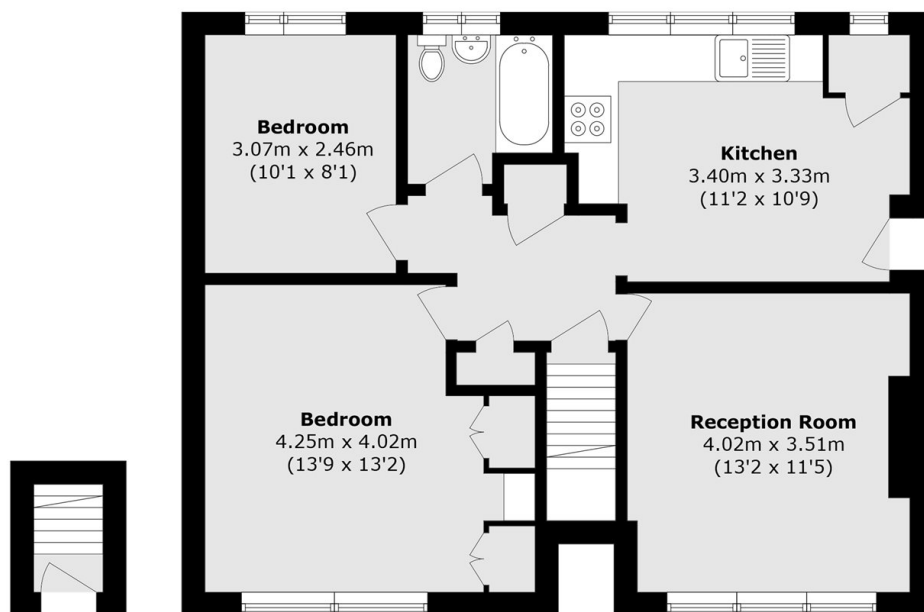
Offered to the market with no onward chain is this larger than average purpose built two bedroom maisonette situated in a popular and sought after location. Further benefits include a long lease, private rear garden and communal off street parking.

Superbly positioned close to local amenities and a short walk to Twickenham Station and high street with a variety of shops and restaurants. There is easy access to A316 with routes in and out of London.

Features

- No Onward Chain
- Two Bedroom Apartment
- First Floor
- Long Lease
- No Service Charge
- Private Garden
- Parking Available

Twickenham Road, Isleworth, TW7



Ground Floor

First Floor

Total area (approx.): 64.8 sq. m (697.5 sq. ft)