



**Great West Road, TW5**  
**£425,000**

**Dexters**



## Great West Road, TW5

A bright and superbly spacious two/three double bedroom apartment presented in beautiful order throughout. The property benefits from a balcony, an extended lease, communal parking and no onward chain.

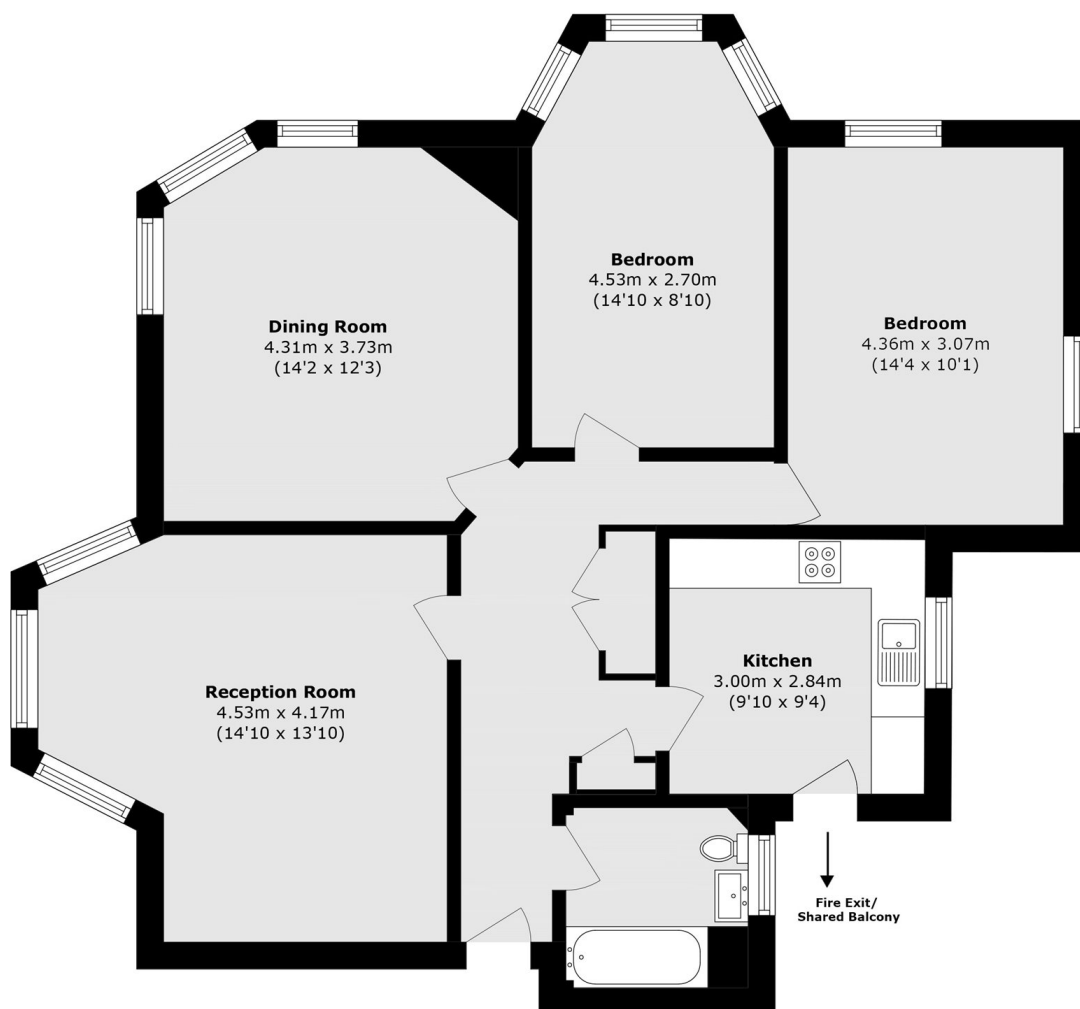
Located moments from Osterley tube station (Piccadilly line) with easy access to Central London and Heathrow Airport. There are excellent local amenities, parks and schools nearby with easy access to neighbouring areas of Chiswick, Ealing and Kew.

### Features

- Over 900 Sq Ft
- Balcony
- No Onward Chain
- Long Lease
- Next To Tube Station
- Two/Three Bedrooms



# Great West Road, Hounslow, TW5



Total area (approx.): 84.8 sq. m (912.7 sq. ft)