



Smithy Lane, TW3

£475,000

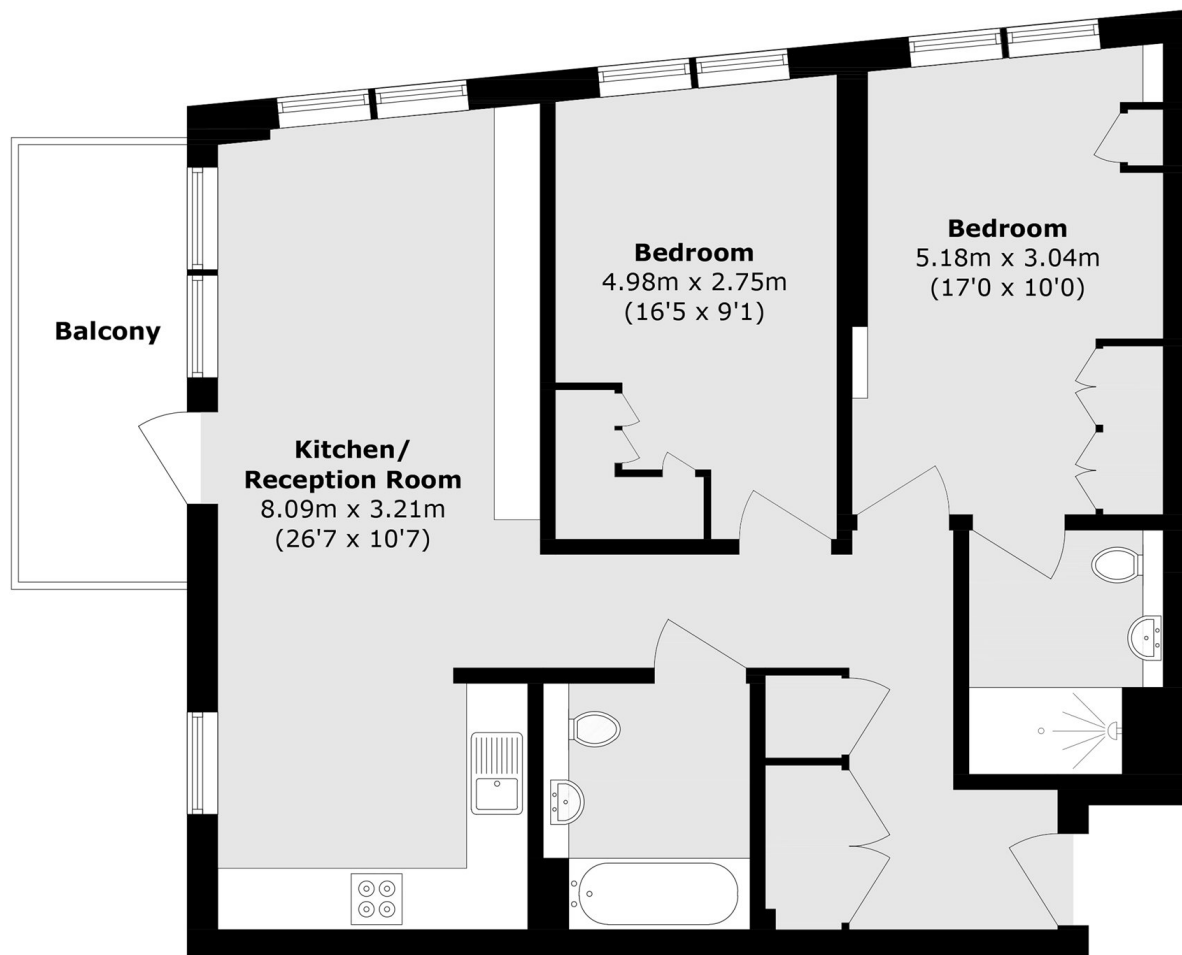
Located on the second floor of this iconic and stunning west London building, we are delighted to launch this exceptional two bedroom, two bathroom apartment. Offering more than 800 square feet of living space, this one of a kind apartment offers stunning views, in addition to a generous balcony. Further benefits include NHBC New Build Warranty and a long lease.

Hooper House is nestled in a sought after and central location in Hounslow Town Centre, surrounded by an array of shops, bars, restaurants and cinema complex. Excellent transport links are located nearby

Features

- Second Floor Apartment
- Two Double Bedrooms
- Two Bathrooms
- Balcony & Communal Gardens
- Immaculate Condition
- Secure Parking Space

Smithy Lane, Hounslow, TW3



Total area (approx.): 74.5 sq. m (801.4 sq. ft)

Balcony (approx.): 7.1 sq. m (76 sq. ft)