



Woodlands Road, TW7

£2,995 Per calendar month

A beautifully presented four bedroom period home arranged over three floors, offering over 150 square metres of stylish living space, a private garden, off-street parking, garage, and an exceptional location on a highly desirable road.

Located on Woodlands Road this four bedroom house is moments from Isleworth train station, cafés and supermarkets. St John's Gardens and Isleworth Town Primary School are also within short walking distance, making this an ideal spot a growing family.

Features

Four Bedrooms

Three Bathrooms
Over 150m²

High Ceilings
Off-Street Parking



Woodlands Road, TW7

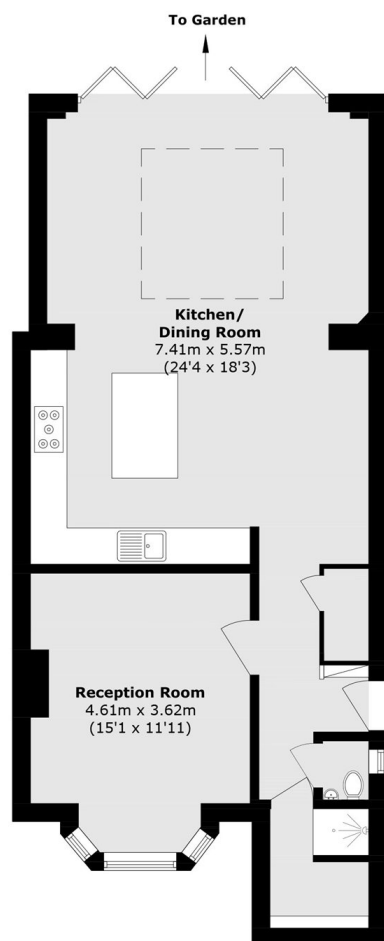
This impressive period home offers generous reception rooms across the ground floor, featuring original fireplaces, high ceilings and wooden floors, creating elegant yet practical living spaces ideal for entertaining, relaxing and everyday family life comfortably.

The lower ground floor hosts a stunning open plan kitchen and dining room, extending seamlessly to a private landscaped garden, perfect for modern living, social gatherings and indoor outdoor entertaining throughout the year comfortably together.

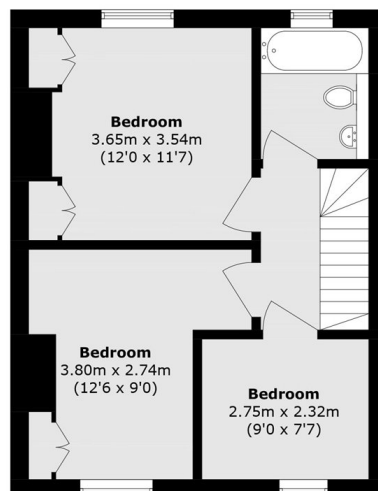
Arranged over three floors, the property provides four well proportioned bedrooms, three bathrooms, over 150 square metres of accommodation, plus off-street parking and a private garage on this highly desirable road.



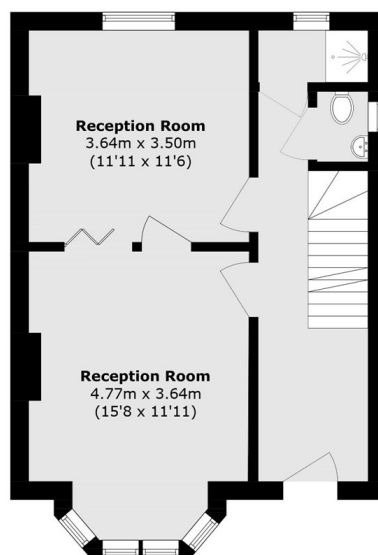
Woodlands Road, Isleworth, TW7



Lower Ground Floor



First Floor



Ground Floor

Total area (approx.): 153.0 sq. m (1646.8 sq. ft)