



Woodlands Road, TW7

£1,095,000

Set on a sought-after residential road is a truly unique semi-detached Victorian home offering 1,647 sq ft of beautifully balanced accommodation arranged over three floors. Rich in period charm and thoughtfully extended, this exceptional property combines elegant character with flexible modern living. The lower ground floor provides a superb sense of versatility. To the front is a separate reception room, ideal as a snug or fourth bedroom if required. To the rear, a stunning modern extended kitchen forms the heart of the home, complete with a central island and bi-fold doors opening onto a generous west-facing garden. This level also benefits from a handy utility room and a contemporary shower room/WC.

Woodlands Road is a sought after location in Isleworth and is ideally positioned with easy access to Isleworth Station with regular train services to London Waterloo. St. Margaret's and Richmond are close by, in addition to a vast array of nearby shops, cafés and restaurants.

Features

Semi Detached Period House
Three/Four Bedrooms
Two/Three Reception Rooms
Three Bathrooms
Large West-Facing Garden
Driveway & Garage
No Chain

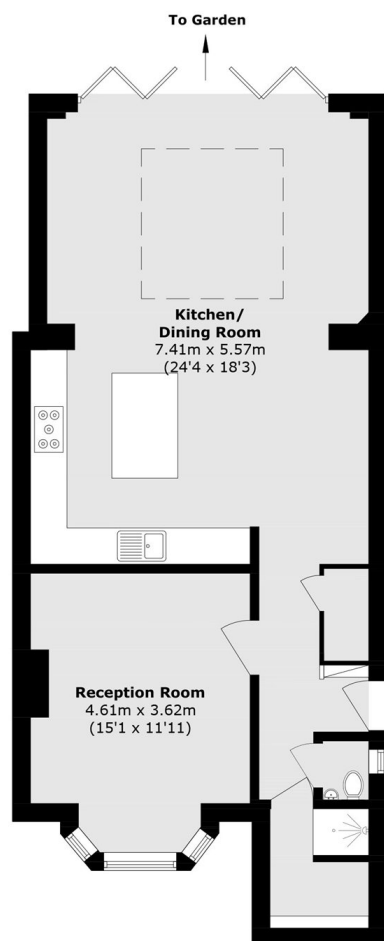


Woodlands Road, TW7

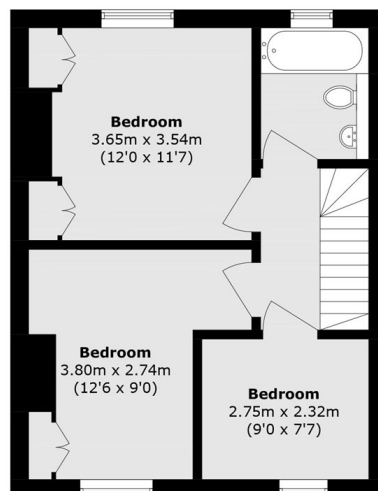
On the ground floor, two elegant reception rooms are divided by folding wooden doors, allowing the space to be opened up or used separately. A bay fronted window floods the front room with natural light, while additional shower room and WC facilities add further practicality. The first floor hosts three well proportioned bedrooms, along with a stylish family bathroom. Throughout the house, original Victorian features shine through, giving the property warmth, character and a timeless appeal. With three reception rooms and three bedrooms as currently arranged and the flexibility to create four bedrooms and two reception rooms this is a home that can adapt effortlessly to changing needs. A rare gem in Isleworth, this impressive Victorian house offers space, charm and versatility in equal measure, making it a truly special place to call home.



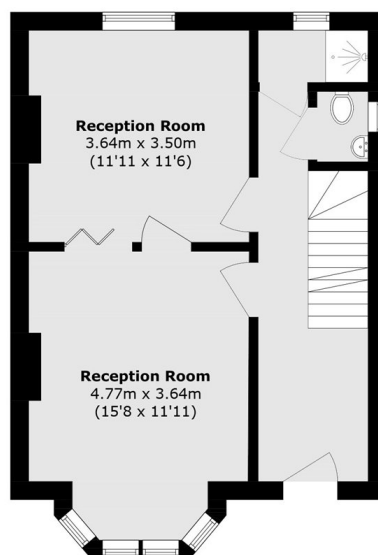
Woodlands Road, Isleworth, TW7



Lower Ground Floor



First Floor



Ground Floor

Total area (approx.): 153.0 sq. m (1646.8 sq. ft)