



Heath Road, TW3

£2,400 Per calendar month

This very modern, newly refurbished split level apartment features three spacious bedrooms, a bright reception area, a stylish kitchen dining space, and two balconies, offering contemporary living with excellent flow, comfort, and private outdoor areas.

The property is ideally positioned in a family oriented area, just moments from Isleworth and Whitton, half a mile from Hounslow Rail Station, and around the corner from Inwood Park and Hounslow High Street nearby.

Features

- Split Level Apartment
- Newly Refurbished
- Three Spacious Bedrooms
- Bright Reception Room
- Two Private Balconies
- Excellent Transport Links



Heath Road, TW3

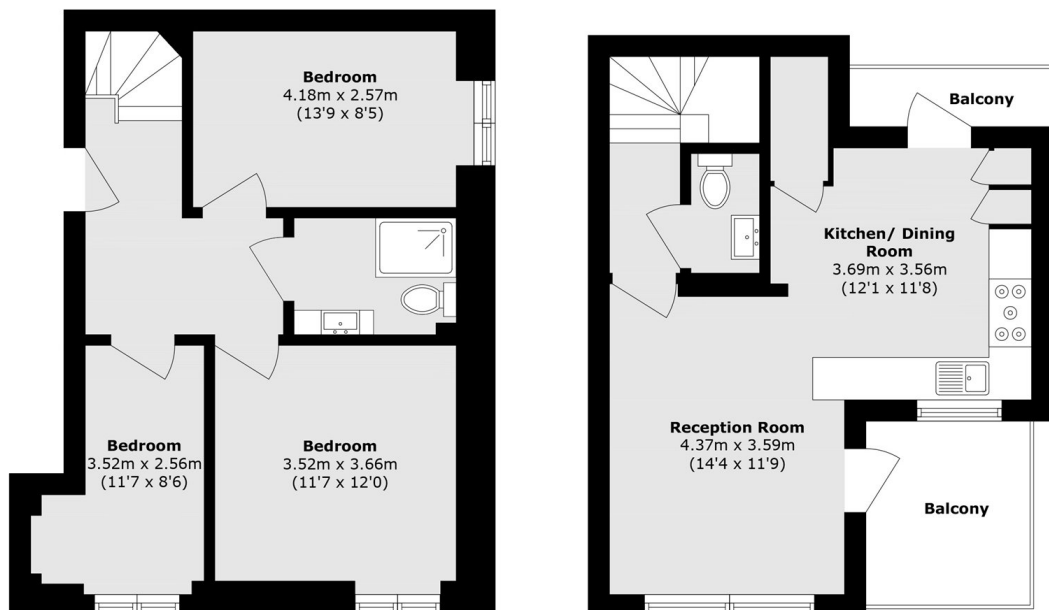
This very modern, newly refurbished split level apartment welcomes you with a bright reception room, elegant finishes, and seamless flow into a stylish kitchen dining space, creating an ideal setting for entertaining, relaxing, and living.

The property offers three well proportioned bedrooms across the upper level, each designed with comfort in mind, featuring generous storage, soft natural light, and a calm contemporary atmosphere perfect for rest, privacy, and flexible needs.

Completing the home is a sleek modern bathroom, thoughtful storage throughout, and access to two private balconies, while the split level layout enhances separation between living and sleeping areas, delivering both style, functionality, and space throughout.



Heath Road, Hounslow, TW3



Total area (approx.): 83.1 sq. m (894.5 sq. ft)
Balcony area (approx.): 8.4 sq. m (90.4 sq. ft)