



## London Road, TW7

### £575,000

Set within a sought after development in the heart of Isleworth, this unique and exceptionally rare split-level penthouse apartment offers a scale and layout that is virtually unrivalled in West London. Extending to almost 1,320 sq ft of internal living space, this is the largest apartment in the development and represents a truly exceptional purchase. Arranged thoughtfully over two spacious floors, the property provides remarkable flexibility for family living, entertaining, or home working. The first floor hosts three well-proportioned bedrooms alongside bathroom accommodation, while the top floor is dedicated to two further bedrooms and opens directly onto a full width private balcony, offering valuable outdoor space and an elevated sense of privacy.

Odeon Parade is a sought after and popular development situated on London Road within close proximity to local shops, parks and Isleworth train station with regular services to London Waterloo. The property is also within easy reach to neighbouring areas of Richmond, Twickenham and Chiswick.

### Features

- Duplex Penthouse Apartment
- Five Bedrooms
- Two Bathrooms
- Long Lease - Approx 975 years
- Gated Allocated Parking
- No Chain



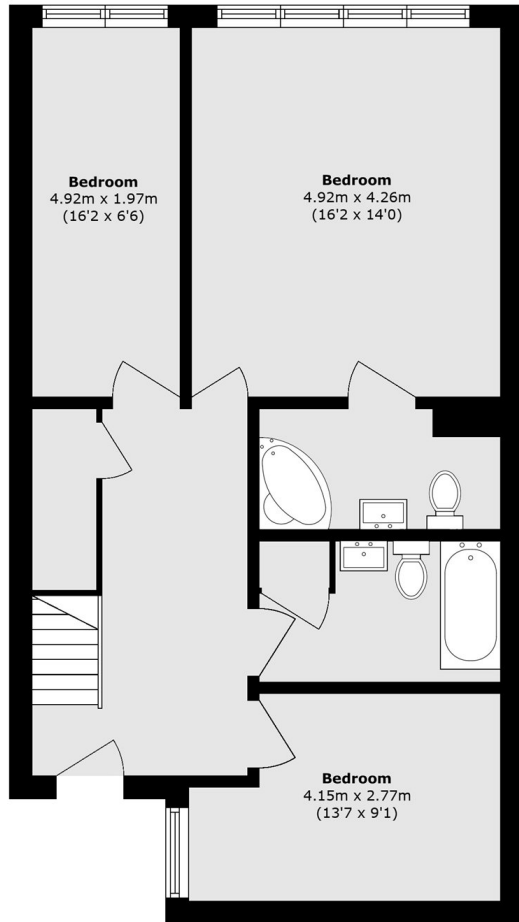
## London Road, TW7

At the heart of the home is a generous open-plan kitchen and reception room, designed for modern living and perfectly suited to both everyday life and larger gatherings. The split-level design enhances the feeling of space and separation, more akin to a house than a conventional apartment. Further benefits include gated/allocated parking, a 975-year lease and the significant advantage of being offered with no onward chain, allowing for a smooth and efficient purchase. With its substantial square footage, unique configuration, and rarity, this penthouse is genuinely difficult to compare with any other property.

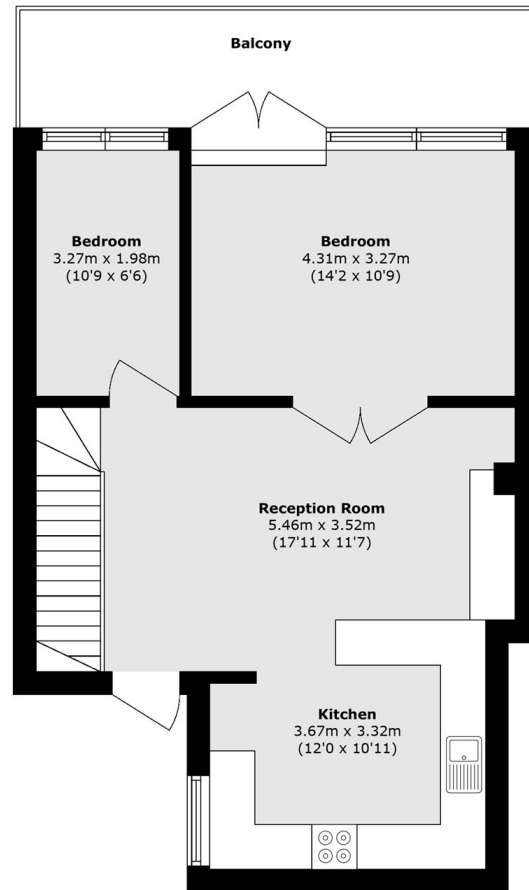




# London Road, Isleworth, TW7



**Third Floor**



**Fourth Floor**

Total area (approx.): 122.6 sq. m (1319.7 sq. ft)  
Balcony area (approx.): 11.2 sq. m (120.6 sq. ft)