



Cambridge Close, TW4

£3,500 Per calendar month

This spacious four bedroom family home offers well proportioned living, a welcoming reception room, modern kitchen-dining space, four WCs, two showers, private garden, and a driveway for off street parking, schools, and transport.

Cambridge Close is a quiet residential road, conveniently located near amenities on Staines Road and Bath Road, with Hounslow West Station on the Piccadilly Line and Hounslow Heath both within easy reach.

Features

- Four/Five Bedrooms
- Two Reception Rooms
- Four Bathrooms
- Modern Kitchen
- Private Garden
- Off-Street Parking



Cambridge Close, TW4

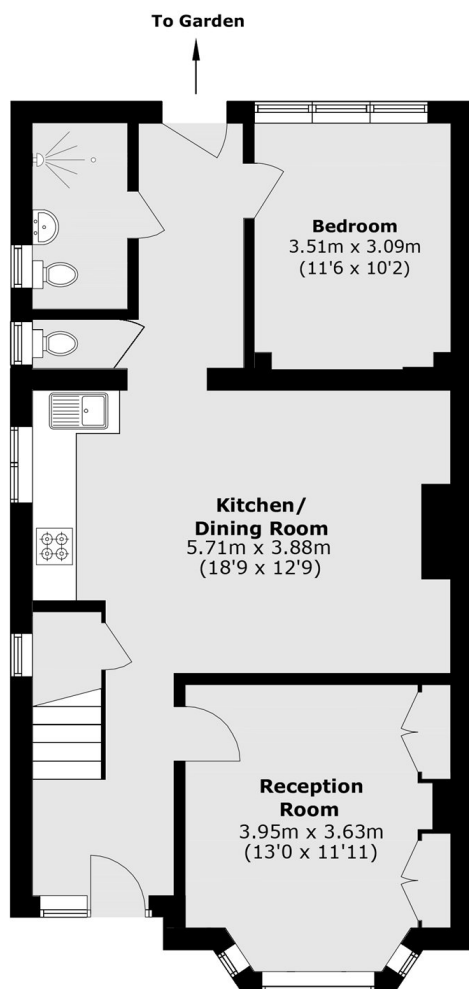
This expansive four bedroom family home offers a welcoming reception room ideal for relaxing or entertaining, complemented by a practical layout that suits modern family living, with bright spaces throughout creating comfort, flexibility, and an inviting atmosphere.

A standout feature is the exceptional convenience of two shower facilities and four WCs, helping busy households manage morning routines with ease, while thoughtful design ensures privacy, efficiency, and flow between bedrooms, bathrooms, and areas.

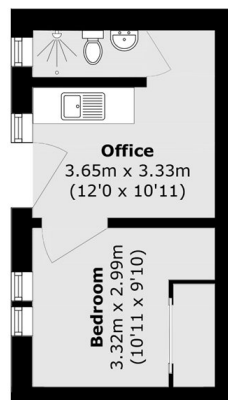
Outside, a private garden provides space for children, outdoor dining, or quiet relaxation, and a valuable driveway offering off street parking.



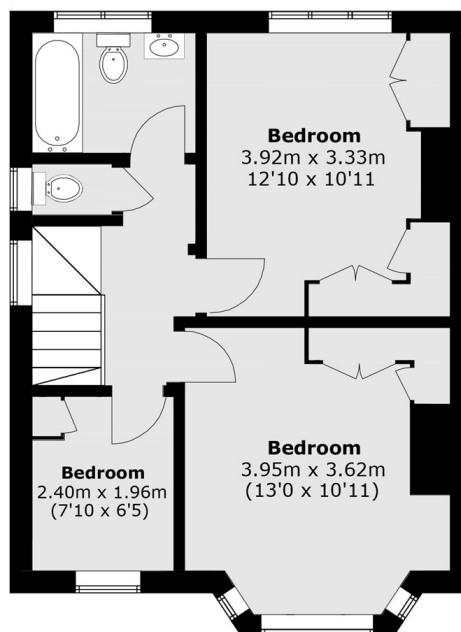
Cambridge Close, Hounslow, TW4



Ground Floor



Ground Floor



First Floor

Total area (approx.): 131.5 sq. m (1,415.4 Sq. ft)
Outbuilding area: 22.5 sq. m (242.2 Sq. ft)