



Lanadron Close, TW7

£2,095 Per calendar month

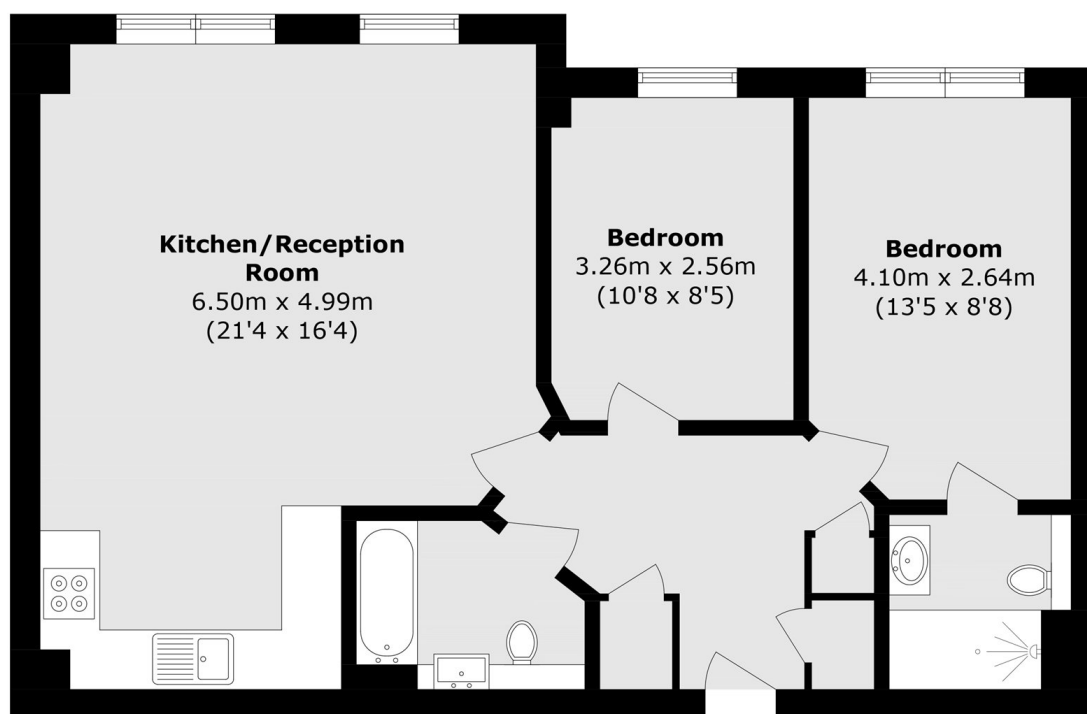
A stunning two-bedroom, two-bathroom apartment in a sought-after development near Isleworth Station, featuring a spacious open-plan kitchen/reception room, two double bedrooms, and the added benefit of allocated parking.

Lanadron Close sits just off London Road, close to local amenities and Isleworth Station, with easy access to St Margarets, Richmond, and Twickenham.

Features

- Two Bedrooms
- Two Bathrooms
- Modern Finish
- Open-Plan Kitchen
- Allocated Parking
- Incredible Location

Lanadron Close, Isleworth, TW7



Total area (approx.): 64.4 sq. m (693.2 sq. ft)