



London Road, TW7
£375,000

Dexters



London Road, TW7

We are delighted to bring to the market this delightful and immaculately presented ground floor period conversion located in a popular and sought after location. Spanning more than 680 square feet of generous living space, this larger than average one double bedroom apartment oozes period features and high ceilings. We love the bay-fronted reception room with striking feature fireplace, which can also serve as an additional bedroom for visiting friends or family. Further benefits include a share of the freehold (no service charge or ground rent), direct access to a secluded garden and off street parking/driveway for one car.

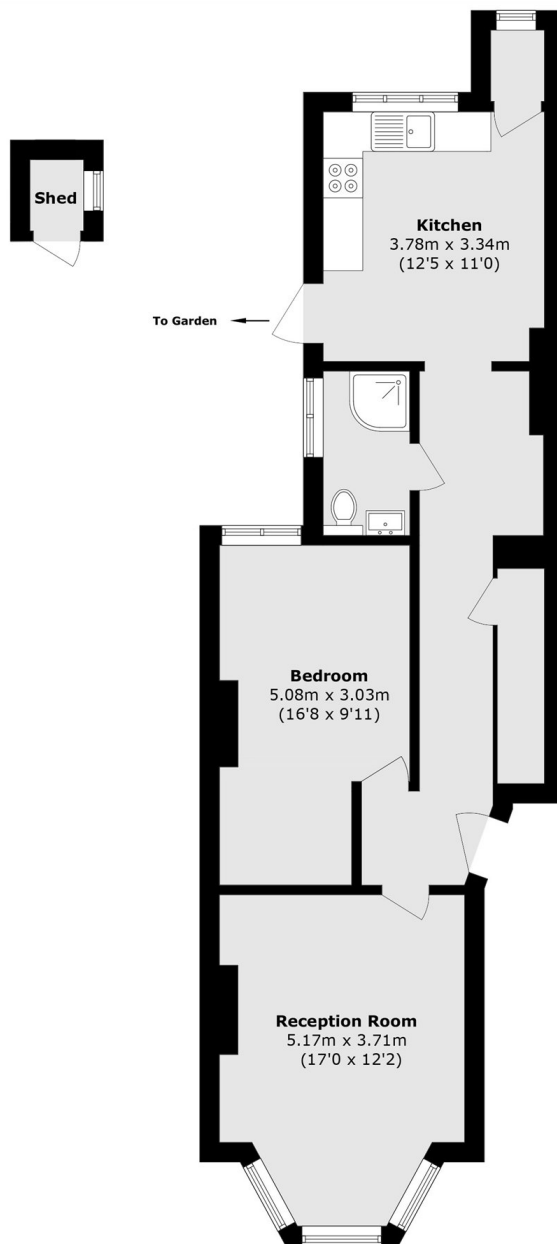
Located in the heart of Isleworth, London Road provides easy access to Isleworth Mainline Station, Osterley Tube Station, the A4, M4, M25, the Thames and Thornbury Park. There are a vast array of shops and restaurants in nearby.

Features

- Ground Floor Period Conversion
- Share Of Freehold
- One Double Bedroom
- Larger Than Average
- Driveway/Off-Street Parking
- Garden



London Road, Isleworth, TW7



Total area (approx.): 63.9 sq. m (687.8 sq. ft)
(Excluding Shed)