



## Orchard Road, TW4

### £399,950

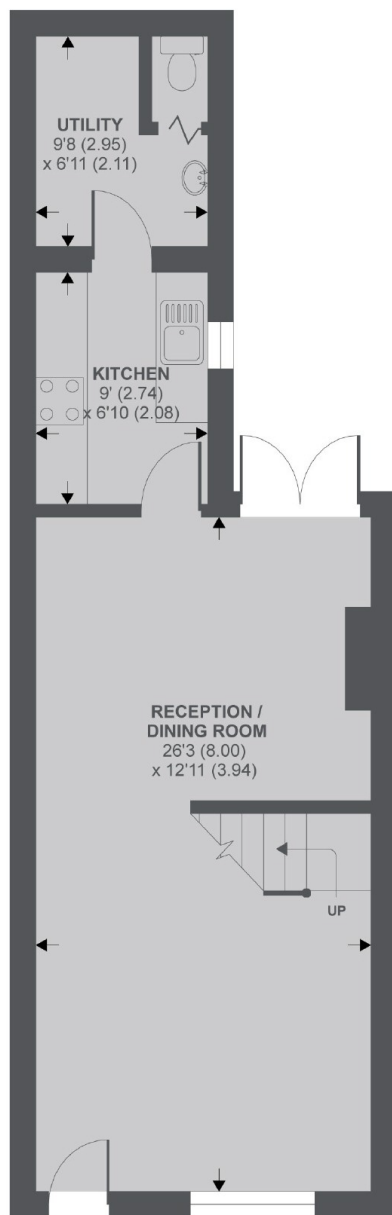
A delightful two double bedroom mid terrace property with a beautiful south facing rear garden. An ideal purchase as a first time purchase or buy to let investment.

Orchard Road is a popular residential road, moments from Orchard Primary School and just a short distance away to a variety of shops on Hounslow High Street and Hounslow Central Station (Piccadilly line).

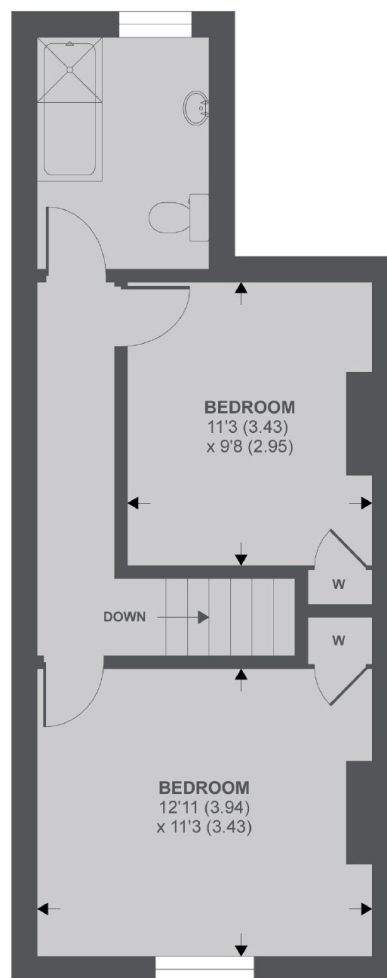
### Features

- Beautifully Presented
- Victorian Property
- Two Double Bedrooms
- South Facing Garden
- Utility Room
- Close To Amenities

# Orchard Road, Hounslow, TW4



Ground Floor



1st Floor

APPROX FLOOR AREA 869 SQ.FT 80.7 SQ.M  
Copyright nichecom.co.uk 2019 REF : 534546

## Dexters

Isleworth  
568 London Road  
Isleworth  
TW7 4EP  
Sales  
020 8560 1177

Energy Rating: D. We aim to make our particulars both accurate and reliable. However they are not guaranteed; nor do they form part of an offer or contract. If you require clarification on any points then please contact us, especially if you're traveling some distance to view. Please note that appliances and heating systems have not been tested and therefore no warranties can be given as to their good working order.

 **RICS** | Regulated  
Estate Agent  
and Letting Agent

dexters.co.uk