



Kilberry Close, TW7

£165,000

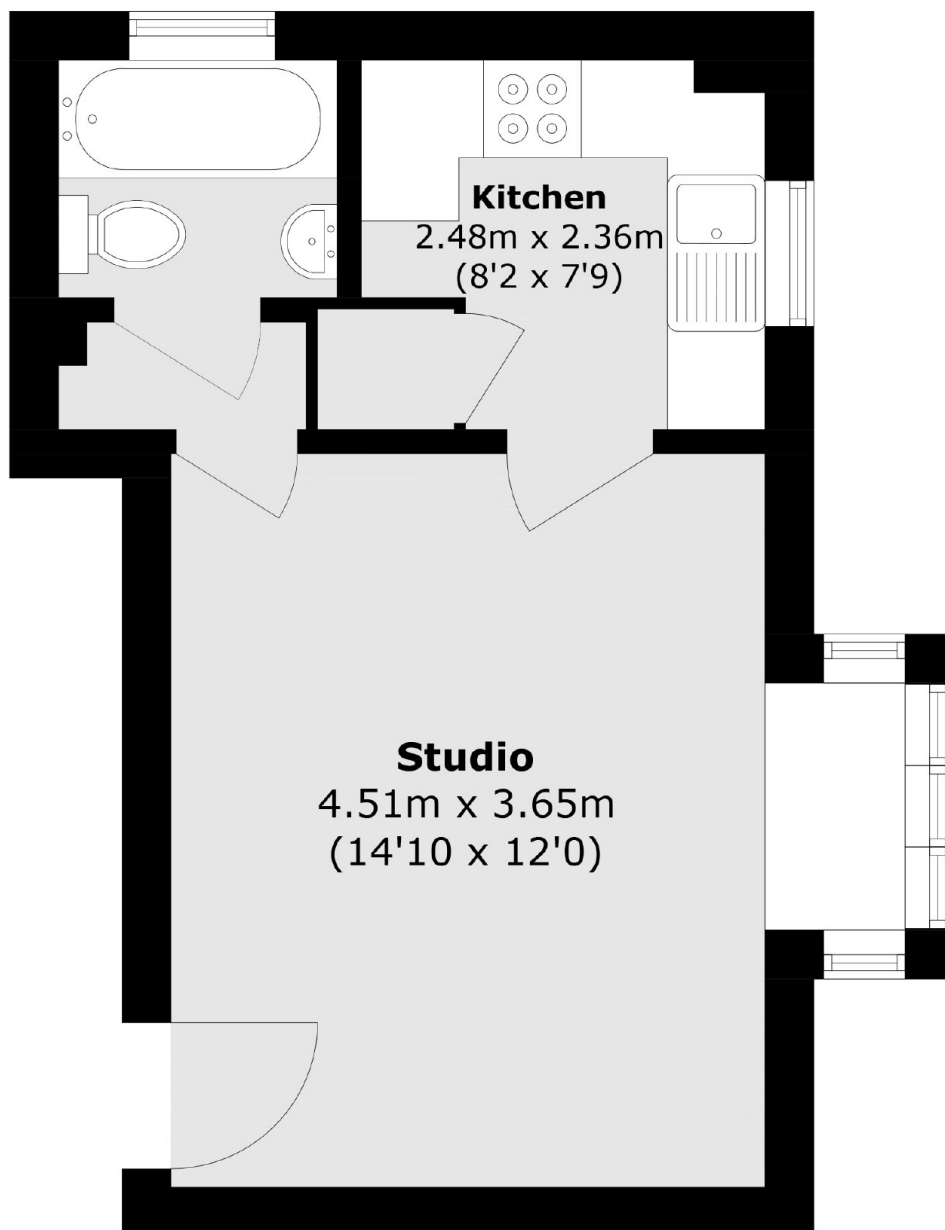
Offered to the market with no onward chain is this delightful top floor studio apartment, with loft access for storage, set within a sought after gated development. Benefits include a long lease, communal grounds and communal parking.

Kilberry Close is a popular and sought after development located off Thornbury Road and provides easy access to Isleworth BR Mainline Station & Hounslow East/Osterley Tube Stations. St Margaret's and Twickenham are also within easy reach.

Features

- Access to Loft
- Good Condition
- Long Lease
- Communal Parking
- Communal Gardens
- No Chain

Kilberry Close, Isleworth, TW7



Total area (approx.): 28.1 sq. m (302.4 sq. ft)

Dexters

Isleworth
568 London Road
Isleworth
TW7 4EP
Sales
020 8560 1177

Energy Rating: D. We aim to make our particulars both accurate and reliable. However they are not guaranteed; nor do they form part of an offer or contract. If you require clarification on any points then please contact us, especially if you're traveling some distance to view. Please note that appliances and heating systems have not been tested and therefore no warranties can be given as to their good working order.

 **RICS** | Regulated
Estate Agent
and Letting Agent

[dexters.co.uk](https://www.dexters.co.uk)