



## Wheatlands, TW5

£569,950

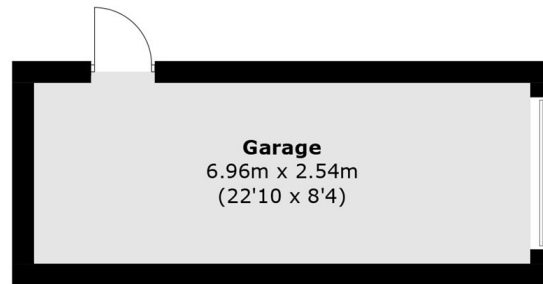
A beautifully presented house located in a popular cul-de-sac. Offering more than 1,400 square feet of generous living space (in addition to a garage 191.6 sq. Ft). As you enter this stunning house you're greeted by a wonderful reception room, a spacious kitchen, study/bedroom and guest WC. On the first floor, there is a further double bedroom with en-suite and a superb light and bright reception room. The top floor is home to a further two double bedrooms and family bathroom. We absolutely love the stunning views overlooking green fields and Osterley Park in the distance. Further benefits include a private and secluded east-facing garden, garage and parking available.

Wheatlands is a popular residential location which is ideally located for easy access to the A4 and M4. Osterley Tube Station (Piccadilly Line) and Osterley Park are also nearby, as are all the local shops and amenities.

### Features

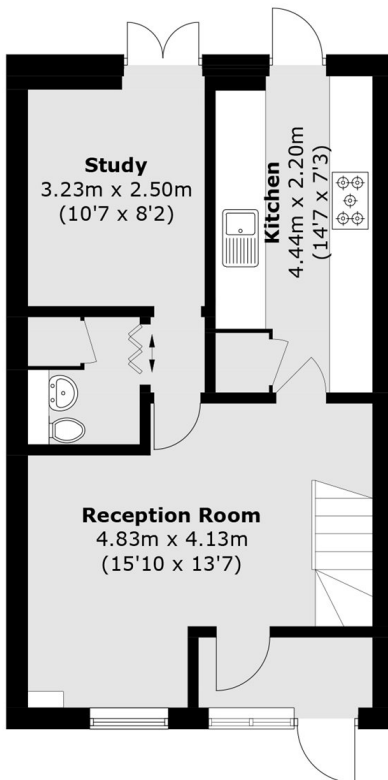
Three/Four Bedroom House  
Two Bathrooms & Guest WC  
Large Garden  
Garage & Parking Available  
Stunning Views  
Popular Location

# Wheatlands, Hounslow, TW5



**Garage**  
6.96m x 2.54m  
(22'10 x 8'4)

(Not Shown In Actual  
Location / Orientation)

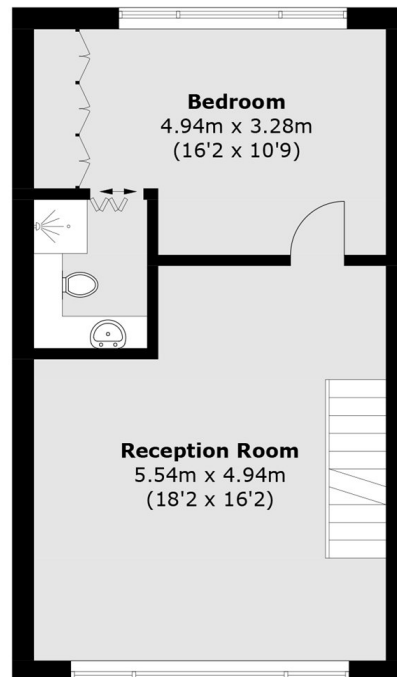


**Study**  
3.23m x 2.50m  
(10'7 x 8'2)

**Kitchen**  
4.44m x 2.20m  
(14'7 x 7'3)

**Reception Room**  
4.83m x 4.13m  
(15'10 x 13'7)

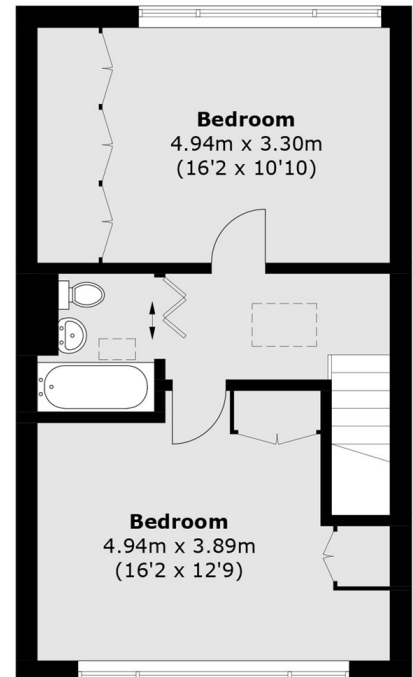
**Ground Floor**



**Bedroom**  
4.94m x 3.28m  
(16'2 x 10'9)

**Reception Room**  
5.54m x 4.94m  
(18'2 x 16'2)

**First Floor**



**Bedroom**  
4.94m x 3.30m  
(16'2 x 10'10)

**Bedroom**  
4.94m x 3.89m  
(16'2 x 12'9)

**Second Floor**

Total area (approx.): 130.5 sq. m (1,404.7 sq. ft)  
Garage: 17.8 sq. m (191.6 sq. ft)