



Lampton Road, TW3

£1,500 Per calendar month

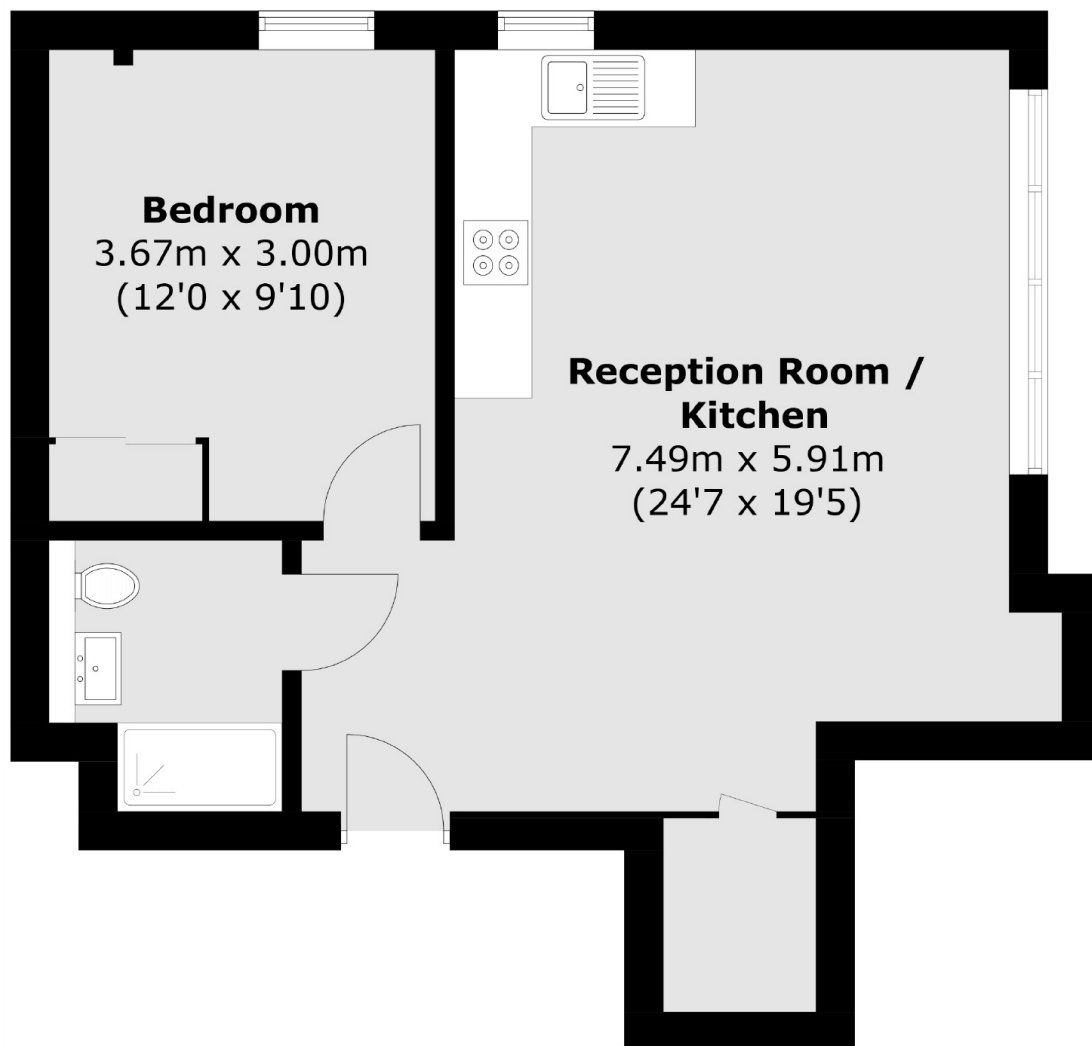
A luxurious double bedroom apartment in this new build development offering bright reception room and a large bedroom with fitted wardrobes. Ideal for a single professional or a couple.

This property is around the corner from Hounslow Central Station, local amenities such as Asda, Hounslow High Street and Lampton Park.

Features

- New Development
- One Double Bedroom
- Bright Reception Room
- Modern Bathroom
- Ample Storage Space
- Open Plan Kitchen

Lampton Road, Hounslow, TW3



Total area (approx.): 45.1 sq. m (485.4 sq. ft)

Dexters

Isleworth
568 London Road
Isleworth
TW7 4EP
Lettings
020 8560 1717

Energy Rating: . We aim to make our particulars both accurate and reliable. However they are not guaranteed; nor do they form part of an offer or contract. If you require clarification on any points then please contact us, especially if you're traveling some distance to view. Please note that appliances and heating systems have not been tested and therefore no warranties can be given as to their good working order.

 **RICS** | Regulated
Estate Agent
and Letting Agent

dexters.co.uk