



## Worton Gardens, TW7

£2,700 Per calendar month

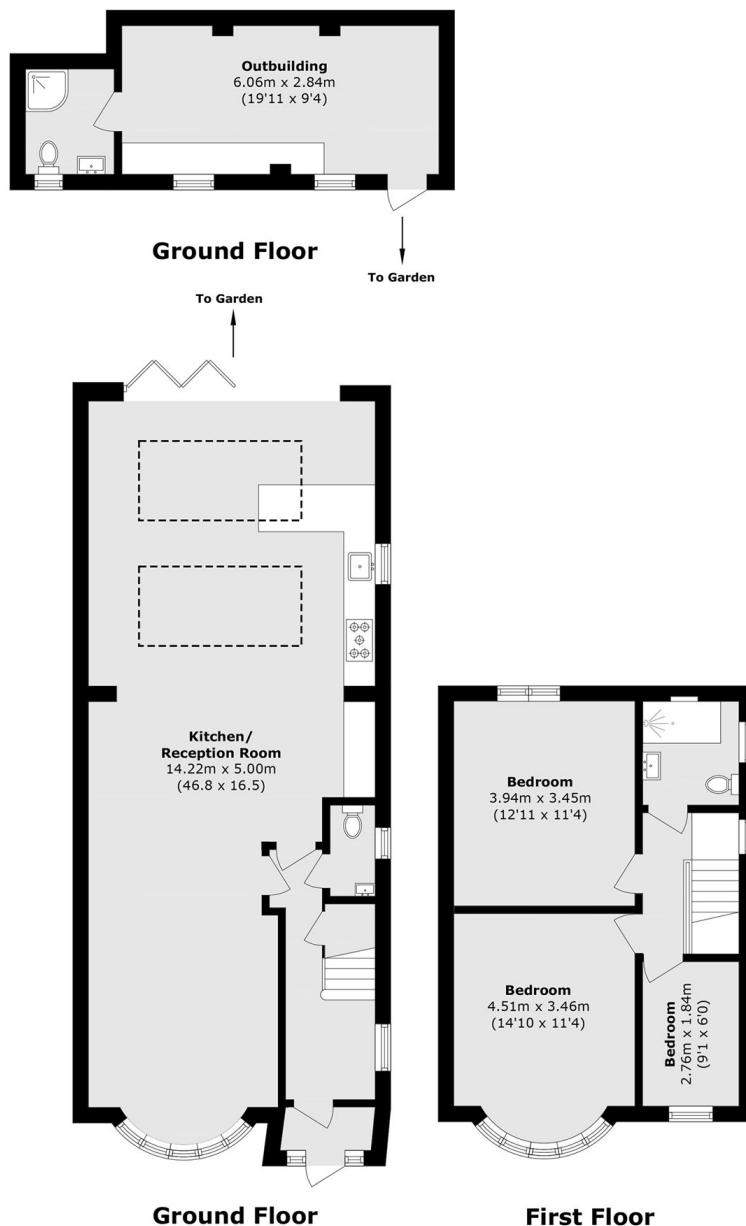
A recently refurbished three bedroom home offering spacious living, modern kitchen reception, stylish bathroom with separate W/C, generous and generous garden.

Worton Gardens is ideally located near Isleworth Station with direct links to Waterloo, easy access to Hounslow East Underground, excellent bus routes, convenient A4/M4 commuting, and close to local shops, amenities, and well regarded schools.

### Features

- Three Bedrooms
- Newly Refurbished
- Large Rear Garden
- Modern Bathroom
- Excellent Transport Links
- Local Schools

# Worton Gardens, Isleworth, TW7



Total area (approx.): 117.8 sq. m (1268.0 sq. ft)  
Outbuilding area (approx.): 20.6 sq. m (221.7 sq. ft)

## Dexters

Isleworth  
568 London Road  
Isleworth  
TW7 4EP  
Lettings  
020 8560 1717

Energy Rating: D. We aim to make our particulars both accurate and reliable. However they are not guaranteed; nor do they form part of an offer or contract. If you require clarification on any points then please contact us, especially if you're traveling some distance to view. Please note that appliances and heating systems have not been tested and therefore no warranties can be given as to their good working order.

**RICS** Regulated  
Estate Agent  
and Letting Agent

dexters.co.uk