



Percy Road, TW7

£2,495 Per calendar month

A charming three bedroom Victorian terraced house featuring spacious living throughout, original period details, two reception rooms, and a private garden.

Within the Catchment for the Blue School, Percy Road is a prime residential cul-de-sac within Old Isleworth, moments from the river Crane, and within a quarter mile of the river Thames with its tow path walks into Richmond.

Features

- Victorian Home
- Three Bedrooms
- Double Reception Room
- Modern Bathroom
- Private Garden
- Downstairs WC

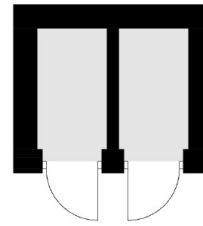


Percy Road, TW7

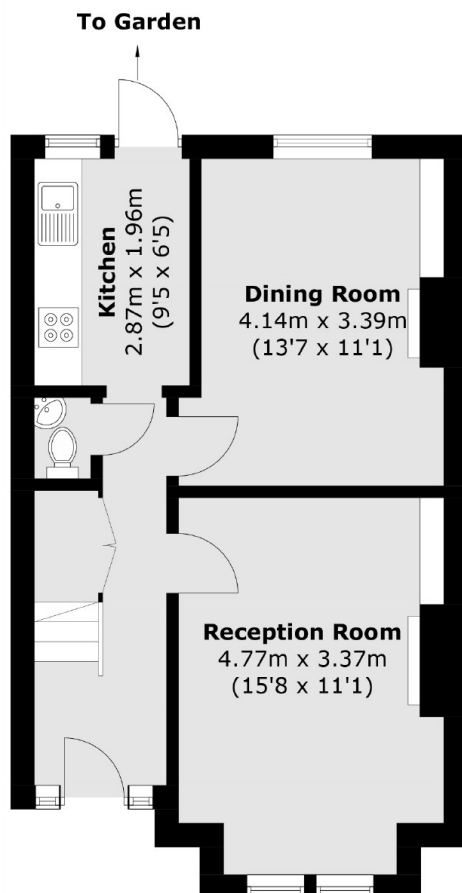
This property is ideal for families looking for a stylish, peaceful home with easy access to beautiful riverside surroundings.



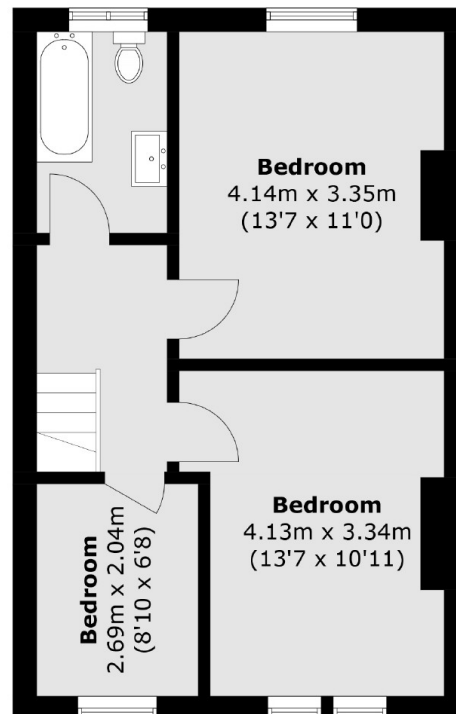
Percy Road, Old Isleworth, TW7



External Storage
(Not Shown In Actual
Location / Orientation)



Ground Floor



First Floor

Total area (approx.): 87.6 sq. m (942.8 sq. ft)
External Storage : 3.1 sq. m (33.3 sq. ft)