



Winchester Road, TW1

£349,950

This lovely first floor maisonette comes with one double bedroom, a useful loft room currently utilised as a bedroom, a long lease and private garden. The living space has flexibility and there is potential to further develop into the loft, converting it into a two double bedroom property. This maisonette is offered with no onward chain and is not to be missed.

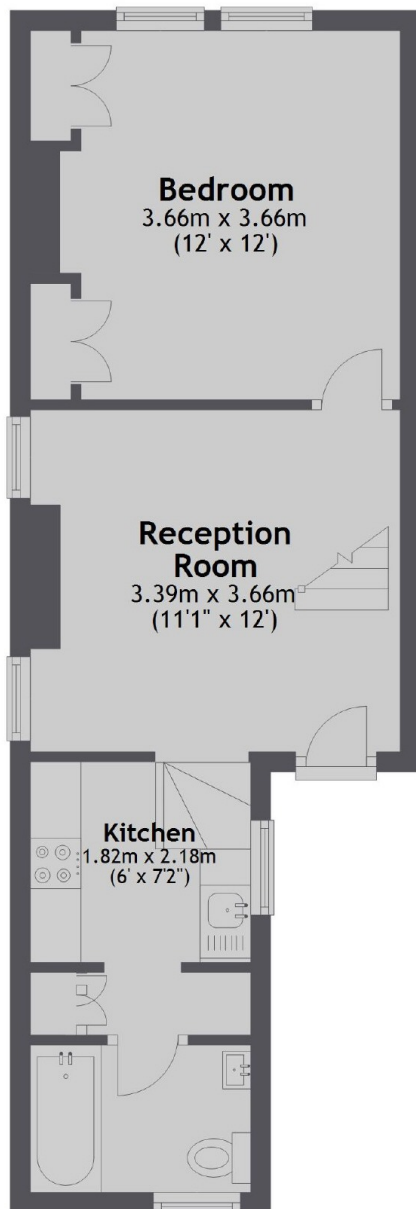
Winchester Road is a central road in the heart of St Margarets Village. Sitting in a convenient spot, within 0.2 miles of the main line train station into London Waterloo, boutique shops and cafés. Moor Mead Park, Marble Hill Park and the River Thames are also close by.

Features

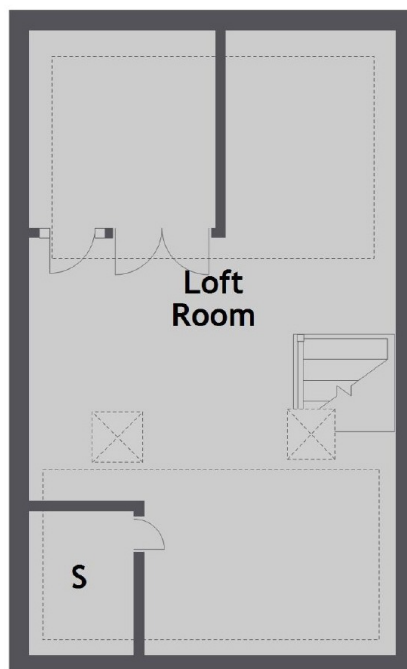
- One Double Bedroom
- First Floor
- Private Garden
- Long Lease
- Vacant Possession
- Loft Room

Winchester Road, St Margarets, TW1

First Floor



First Floor



Total area: approx. 57.8 sq. metres (622.1 sq. feet)