



**Gordon Avenue, TW1**  
**£1,100,000**

**Dexters**





## Gordon Avenue, TW1

This attractive four double bedroom Edwardian home is nestled on a sought-after tree-lined street in the ever-popular St Margarets. A standout feature of this property is the added bonus of an extra garden ideal for outdoor entertaining, children's play or simply enjoying a quiet retreat.

The accommodation is well-proportioned throughout and while in need of modernisation provides an excellent opportunity to create a truly bespoke family home. The ground floor features a spacious double reception room, a kitchen to the rear with a useful utility area which provides additional storage and doors leading onto a double garden.

Upstairs on the first floor are three bedrooms and the family bathroom. The loft has been converted providing a further double bedroom and shower room. This wonderful property still offers further potential for extension on the ground floor and into the loft creating a fifth bedroom.

Gordon Avenue is a firm favourite for our local families looking for easy access to the village, train station, the River Thames, a choice of schools, Marble Hill Park, local cafés and restaurants.

### Features

- Four Double Bedrooms
- Two Reception Rooms
- Two Bathrooms
- Private Double Garden
- Period Features
- Modernisation Required





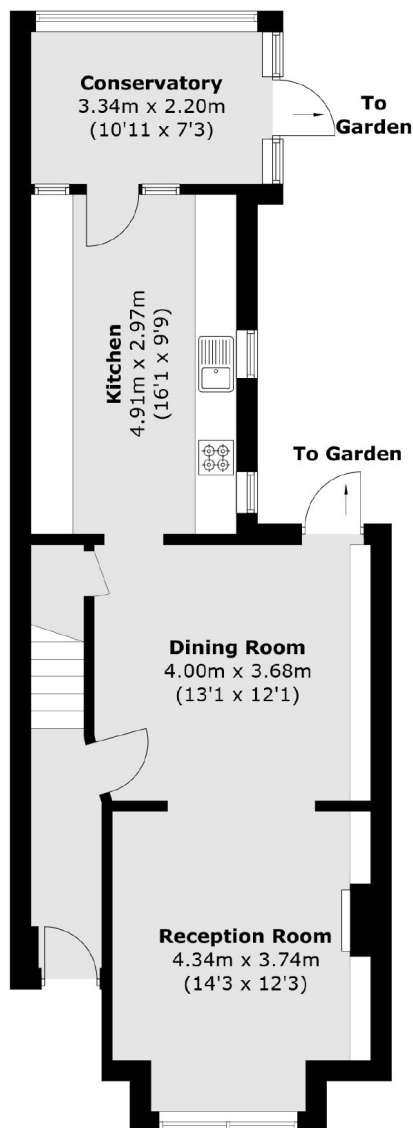




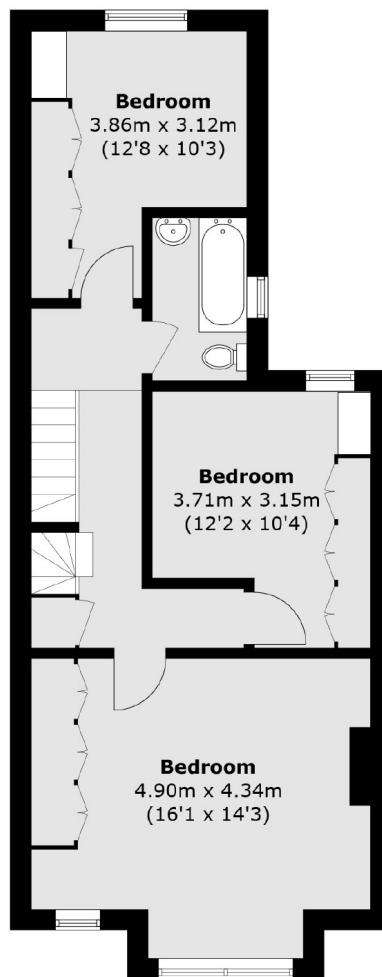




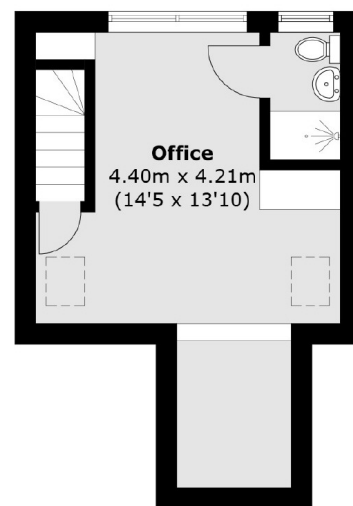
# Gordon Avenue, , TW1



**Ground Floor**



**First Floor**



**Second Floor**

Total area (approx.): 136.8 sq. m (1,472.4 sq. ft)