



Brook Road, TW1  
£899,950

**Dexters**





## Brook Road, TW1

A beautifully presented three bedroom house in the heart of St Margarets village. This wonderful and thoughtfully extended home offers Victorian features and a modern finish.

On the ground floor, the property features a spacious through reception room showcasing period details, a striking feature fireplace and elegant wooden flooring. The reception room flows seamlessly into a bright and contemporary fully fitted kitchen, offering ample space for dining and entertaining. Large doors open onto a charming, well-maintained rear garden that enjoys a tranquil backdrop overlooking the river. The first floor comprises of two comfortable bedrooms and a generously sized family bathroom. The top floor is dedicated to a stunning master suite, complete with a Juliet balcony, extensive storage and a stylish en suite shower room.

Brook Road is in the heart of St Margarets village, within 0.2 miles of Moor Mead park and the cut through walk to the fast service of Twickenham Train Station and within 0.4 miles from St Margarets village.

### Features

- Three Bedrooms
- Period Property
- Village Location
- River Backing
- Beautifully Refurbished
- Close To Moor Mead Park





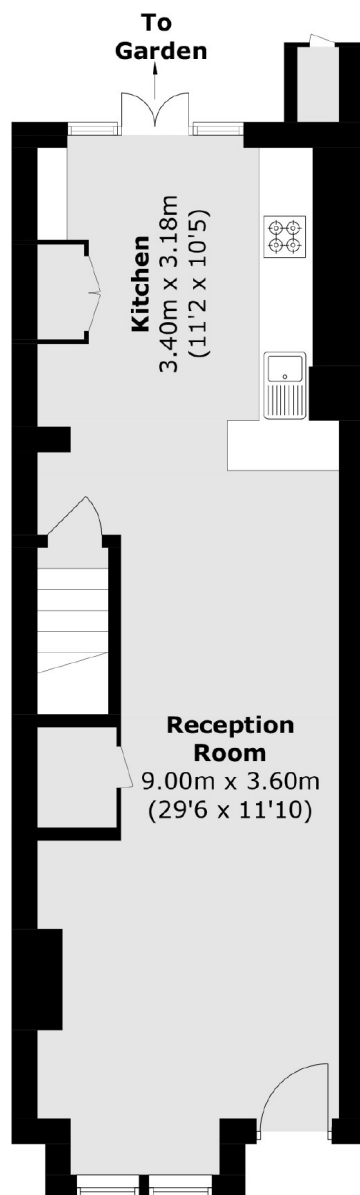




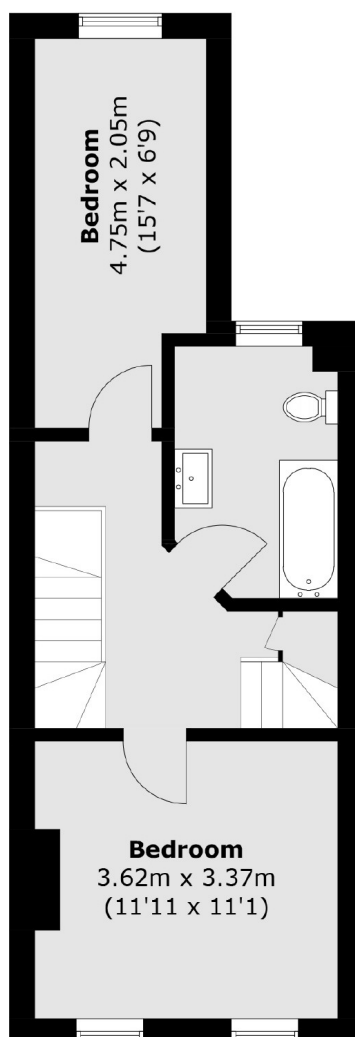




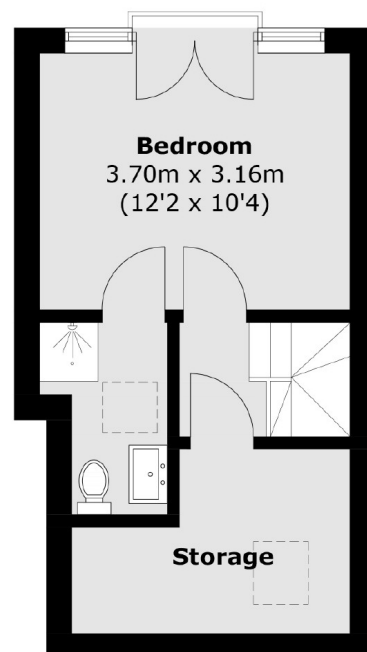
# Brook Road, St Margarets, TW1



**Ground Floor**



**First Floor**



**Second Floor**

Total area (approx.): 103.2 sq. m (1,110.8 sq. ft)  
External Storage: 0.4 sq. m (44 sq. ft)