



Richmond Road, TW1

£1,875 Per calendar month

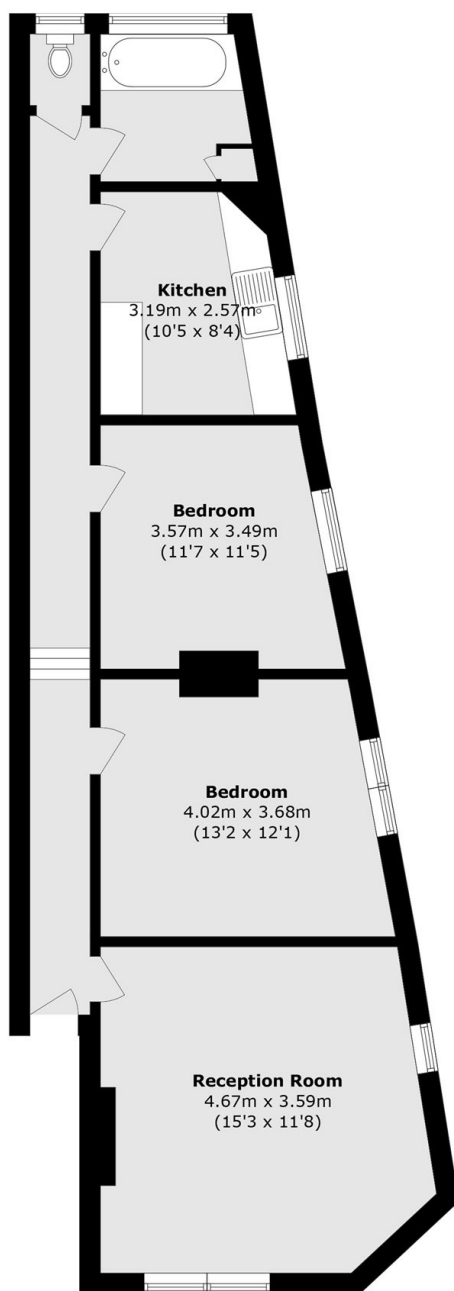
This beautifully presented two bedroom apartment offers a generous living space, high ceilings and a perfect mix of character and modern style. The property features two well-sized bedrooms, a spacious living area, a contemporary kitchen and a bathroom finished to an excellent standard. Filled with natural light and charm, this property is perfectly positioned in a sought-after location within the Deer Park School catchment area.

Richmond Road offers the perfect location with the River Thames, Richmond Bridge, the town centre and the station all just moments away. Surrounded by East Twickenhams charming shops, cafés and green spaces such as Marble Hill park, this highly sought-after area provides the ideal balance of riverside living and convenient access to everything Richmond has to offer. St Margarets villlage and train station are also close by.

Features

- Two Double Bedrooms
- Top Floor
- Spacious Living Area
- Modern Kitchen
- Contemporary Bathroom
- Deer Park School Catchment

Richmond Road, Twickenham, TW1



Total area (approx.): 74.6 sq. m (802.9 sq. ft)