



Cambridge Park, TW1

£2,199 Per calendar month

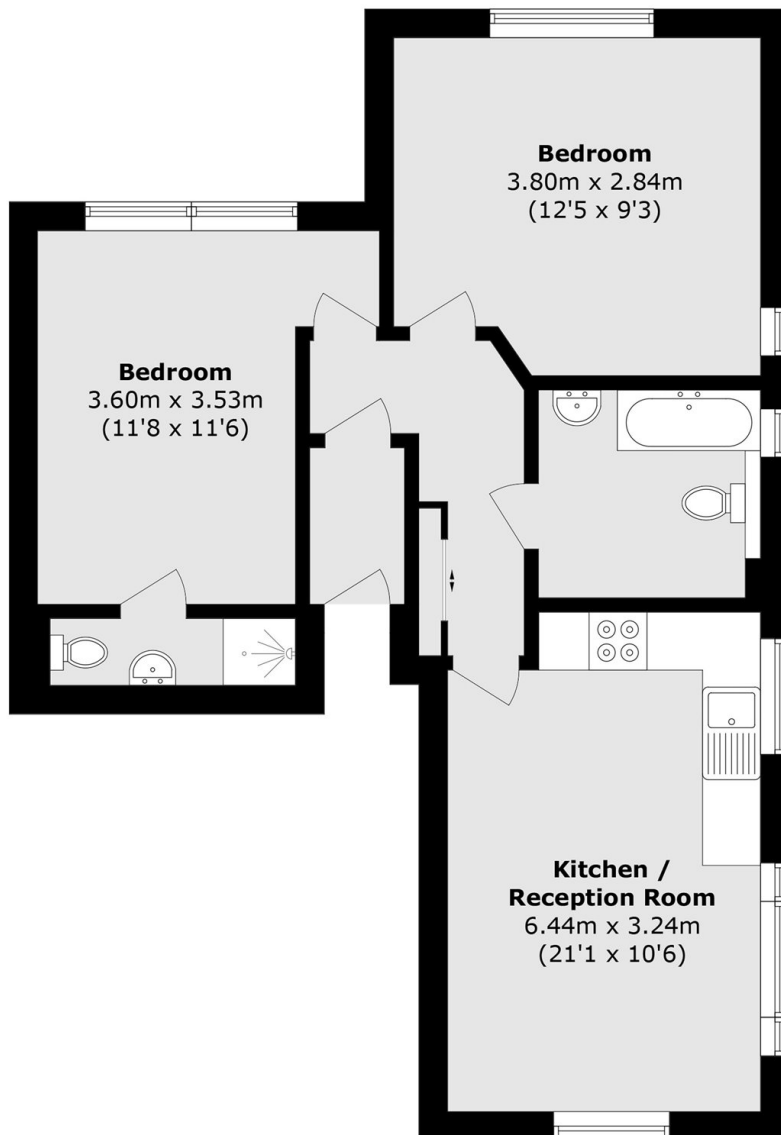
A beautifully presented two-bedroom, two-bathroom apartment set within an impressive Victorian building. Rich in character and charm, this property offers an ideal home for professional occupants, perfectly located within easy walking distance of Richmond and its amenities.

Cambridge Park is a leafy residential cul-de-sac situated 0.3 miles from the banks of the River Thames with its short stroll to Richmond. Richmond boasts popular shops and restaurants and has a main line train station with fast links to Waterloo.

Features

- Two Bedrooms
- Allocated Parking
- Two Bathrooms
- Well Presented
- Close to River Thames
- Communal garden

Cambridge Park, , TW1



Total area (approx.): 56.2 sq. m (604.9 sq. ft)