



White Lodge Close, TW7

£639,950

A fabulous four bedroom town house located in a quiet crescent within one of Isleworth's most coveted private modern developments. Located only a few hundred yards from the River Thames and Old Isleworth with its pubs, shops and cafes. This property is not to be missed.

White Lodge Close is a popular development within 0.8 miles of Syon Lane Train Station and located within easy reach of Isleworth Station with its regular service into London Waterloo. The River Thames is 0.6 miles away and Syon Park is only 1.1 miles away.

Features

- Town House
- Four Bedrooms
- Well-Presented Throughout
- Off-Street Parking
- Garage
- Secluded Rear Garden

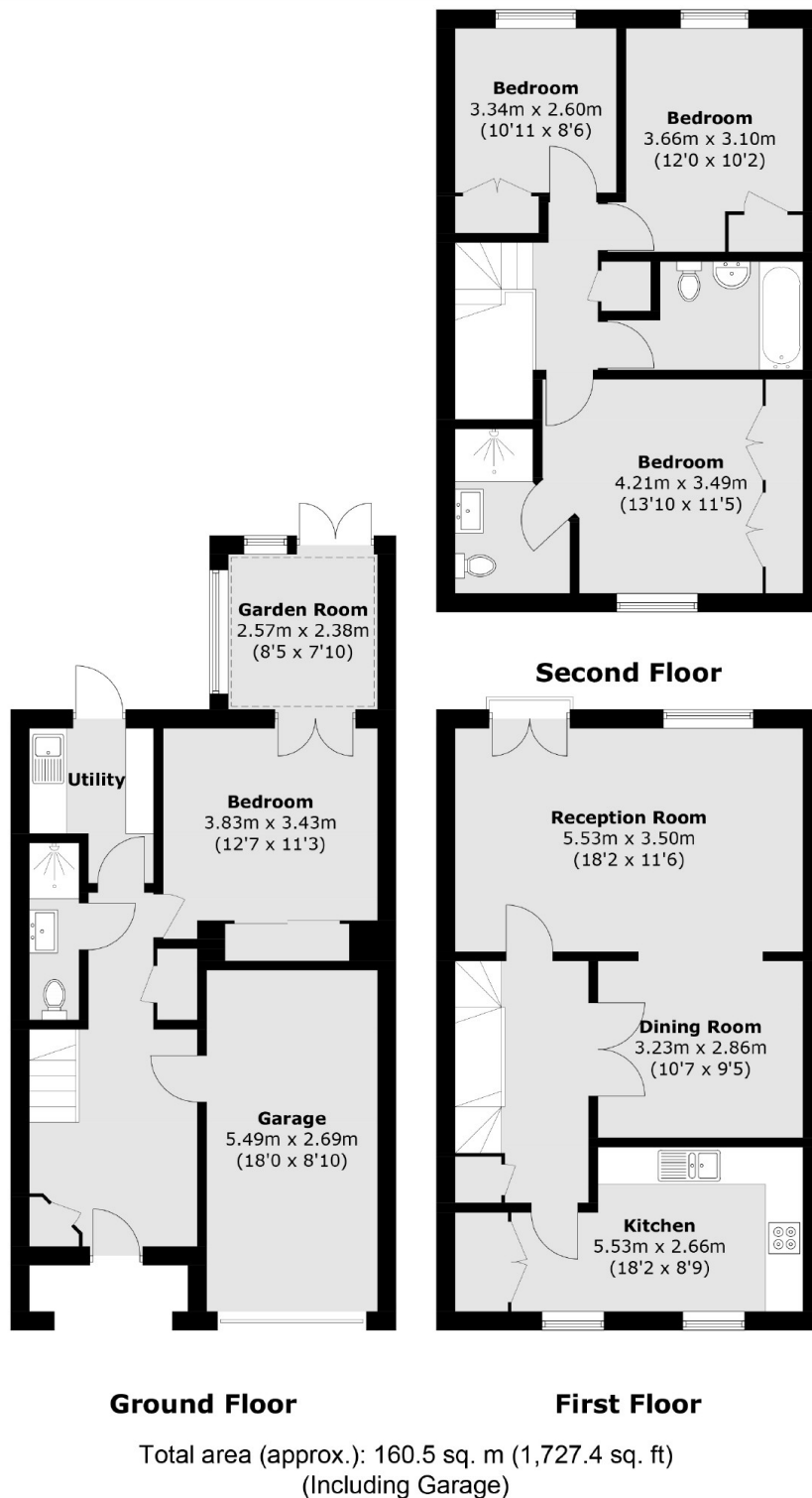


White Lodge Close, TW7

This stylish property offers superb living accommodation over three floors. With an inviting entrance hall, fitted utility room/ kitchenette with a door leading to the rear garden, shower room and bedroom four/additional reception room leading to a conservatory on the ground floor. This floor can be used as a self-contained unit for an au pair or a relative. On the first floor is a spacious open-plan lounge/dining room and modern fully fitted eat in kitchen. The master bedroom with a newly renovated en suite, two further bedrooms and family bathroom are on the top floor. This is a fantastic versatile home which is extremely well presented throughout and has the added benefit of an integral garage and off-street parking.



White Lodge Close, Old Isleworth, TW7



Dexters

St Margarets
1 Chertsey Road
St Margarets
TW1 1LR
Sales
020 8744 9400

Energy Rating: C. We aim to make our particulars both accurate and reliable. However they are not guaranteed; nor do they form part of an offer or contract. If you require clarification on any points then please contact us, especially if you're traveling some distance to view. Please note that appliances and heating systems have not been tested and therefore no warranties can be given as to their good working order.

RICS Regulated
Estate Agent
and Letting Agent

dexters.co.uk