



Amyand Park Road, TW1

£875,000

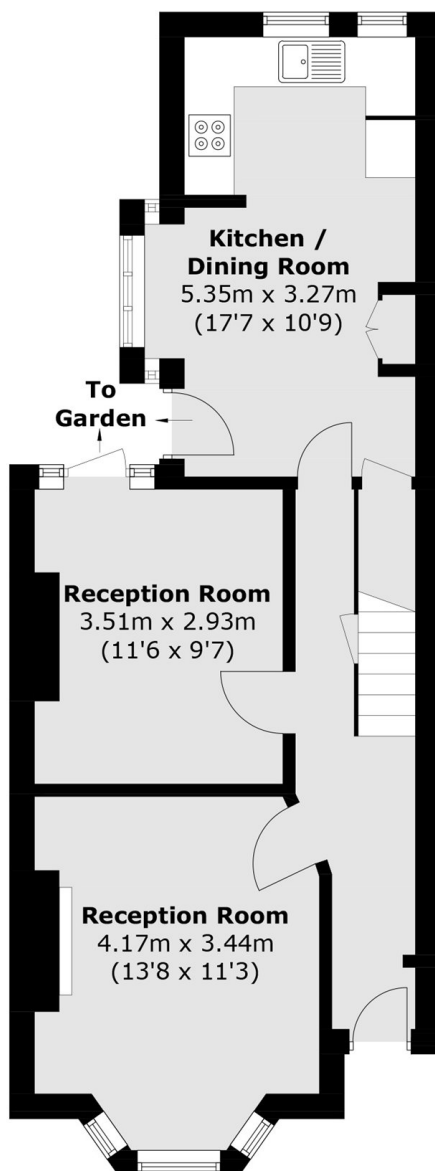
Situated in the heart of St Margarets village, is his spacious three bedroom Victorian family home. The house needs modernising throughout but offers plenty of period features and loads of potential to extend and add value. Offered with no onward chain this property is not to be missed out on.

Located in St Margarets village, the house is moments away from St Margarets high street with its array of boutique shops, cafés, restaurants and train station. The property is also within 0.4 miles of Twickenham Train Station with its fast links into London Waterloo. Some of the most sought after schools in the borough are within close proximity, including Orleans Primary school and Orleans Park Secondary school. As well as Moor Mead Park and Marble Hill Park.

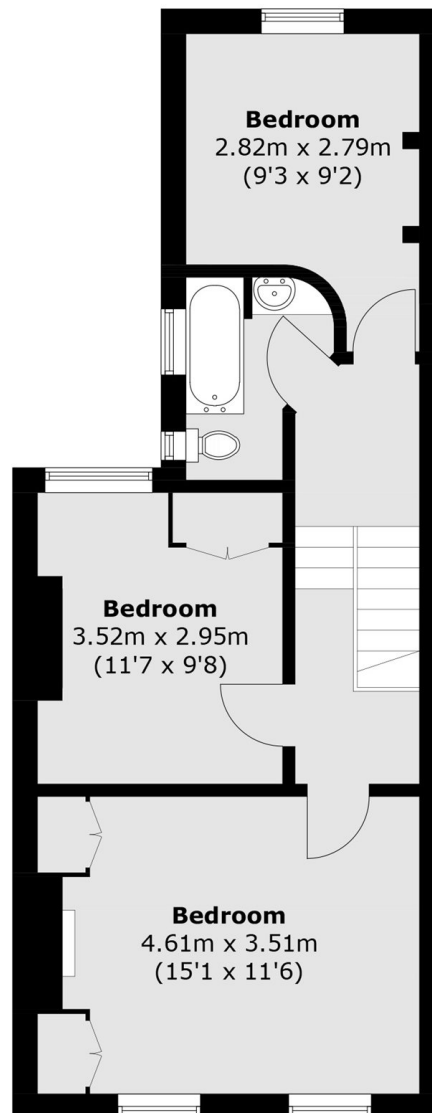
Features

- Victorian Property
- Three Bedrooms
- Fantastic Location
- Unextended
- Potential To Extend
- Outstanding School Catchments

Amyand Park Road, St Margarets, TW1



Ground Floor



First Floor

Total area (approx.): 99.2 sq. m (1,067.8 sq. ft)