



South Street, TW7

£2,450 Per calendar month

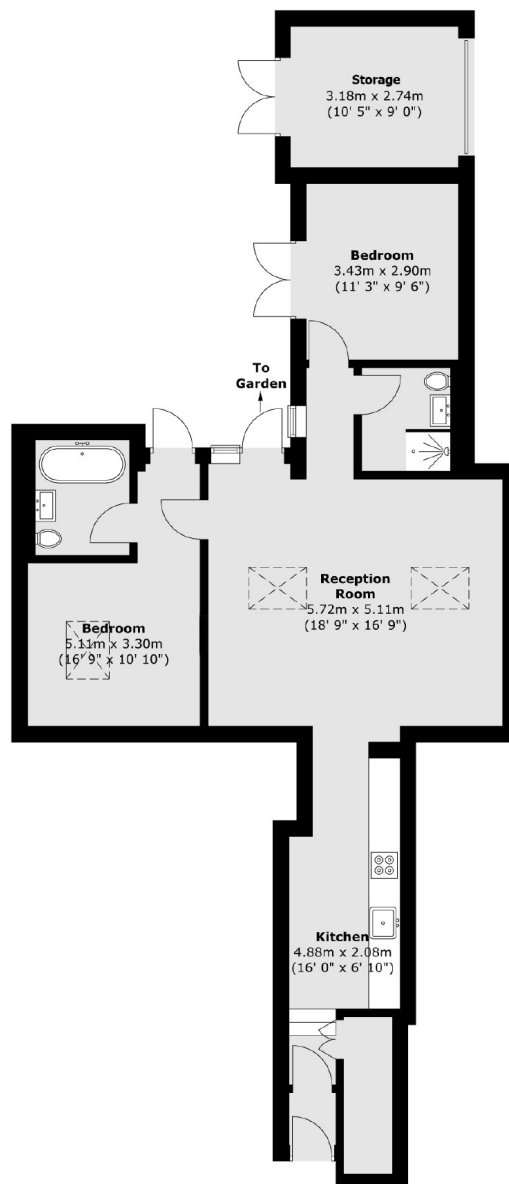
A stylish two bedroom, two bathroom apartment with a bright open-plan living space and modern kitchen. The master bedroom features its own en suite, and both rooms offer comfortable, contemporary living. A standout highlight is the large private patio, perfect for relaxing or entertaining outdoors. This is modern living with great indoor-outdoor appeal.

South Street is in the heart of Old Isleworth within 0.2 miles of the River Thames and its tow path walks into Richmond. Within a mile of Twickenham Station and in the centre of the local amenities.

Features

- Two Double Bedrooms
- Open-Plan Layout
- Bosch Appliances
- Two Bathrooms
- Large Private Patio
- Village Location

South Street, Isleworth, TW7



Total area (approx.) : 81.3 sq. m (875 sq. ft)
Total garage area (approx.) : 9.2 sq. m (99 sq. ft)