



## Heathcote Road, TW1

£1,495 Per calendar month

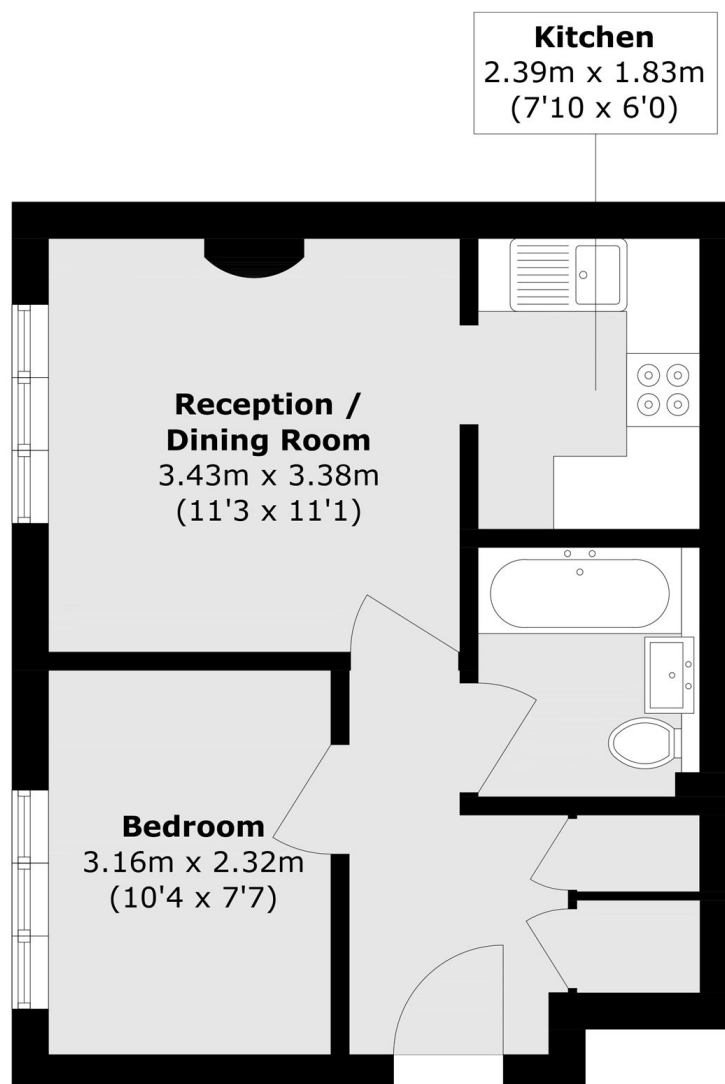
This beautifully presented one bedroom ground floor apartment is set within a modern gated development just moments from the River Thames. Perfect for a couple or single professional, it offers a bright and inviting living room, a stylish fully furnished interior, a well-equipped separate kitchen, a spacious bathroom, ample storage and allocated parking.

Situated just moments from the River Thames, the property is also only a short walk into Richmond. St Margarets village, with its train station, shops and cafés, is located just 0.5 miles away. Old Deer Park and Moor Mead Park are also close by.

### Features

- One Double Bedroom
- Furnished
- Allocated Parking Space
- Gated Development
- Close To The River Thames
- Communal Garden

# Heathcote Road, St Margarets, TW1



Total area (approx.): 35.2 sq. m (378.8 sq. ft)