



Amyand Park Road, TW1
£595,000

Dexters



Amyand Park Road, TW1

A rare opportunity to buy a three bedroom first floor flat, which is bright and spacious throughout and offered to the market in excellent condition. With the added bonus of a long lease and off-street parking, we can't wait to show you around. The day-to-day management of the building is undertaken by a 'right to manage' company formed by the leaseholders.

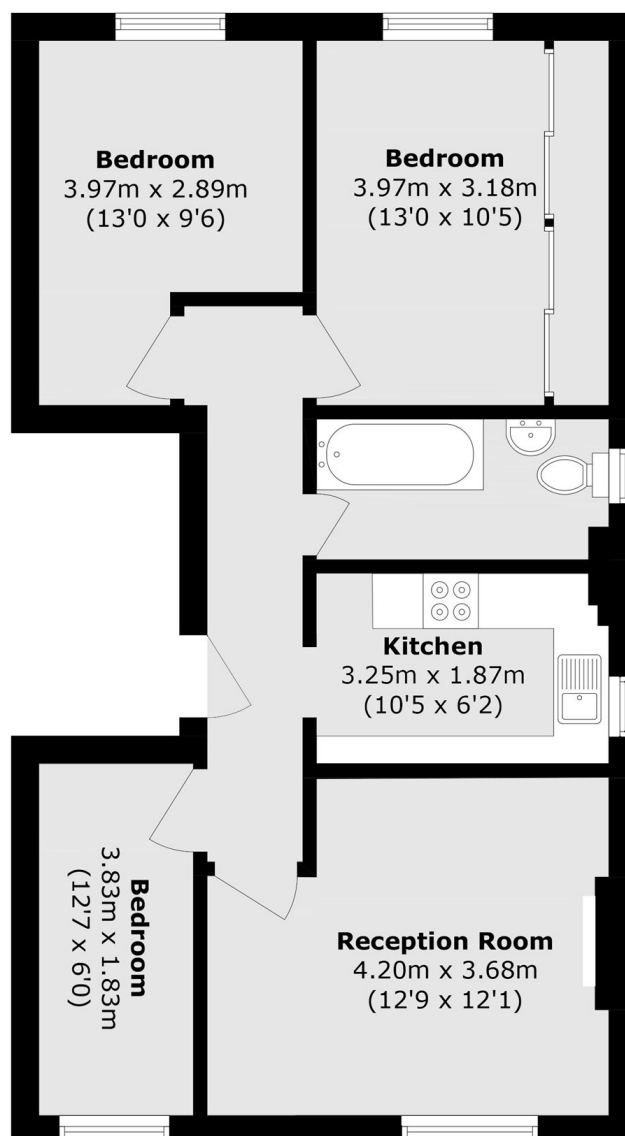
Located in St Margarets village, the house is moments away from St Margarets high street with its array of boutique shops, cafés, restaurants and train station. The property is also within 0.4 miles of Twickenham Train Station with its fast links into London Waterloo. Some of the most sought after schools in the borough are within close proximity, including Orleans Primary school and Orleans Park Secondary school. As well as Moor Mead Park and Marble Hill Park.

Features

- Victorian Property
- Three Bedrooms
- Fantastic Location
- Outstanding School Catchments
- Off-Street Parking



Amyand Park Road, St Margarets, TW1



Total area (approx.): 65.4 sq. m (703.9 sq. ft)