



## Park Road, TW1

£2,995 Per calendar month

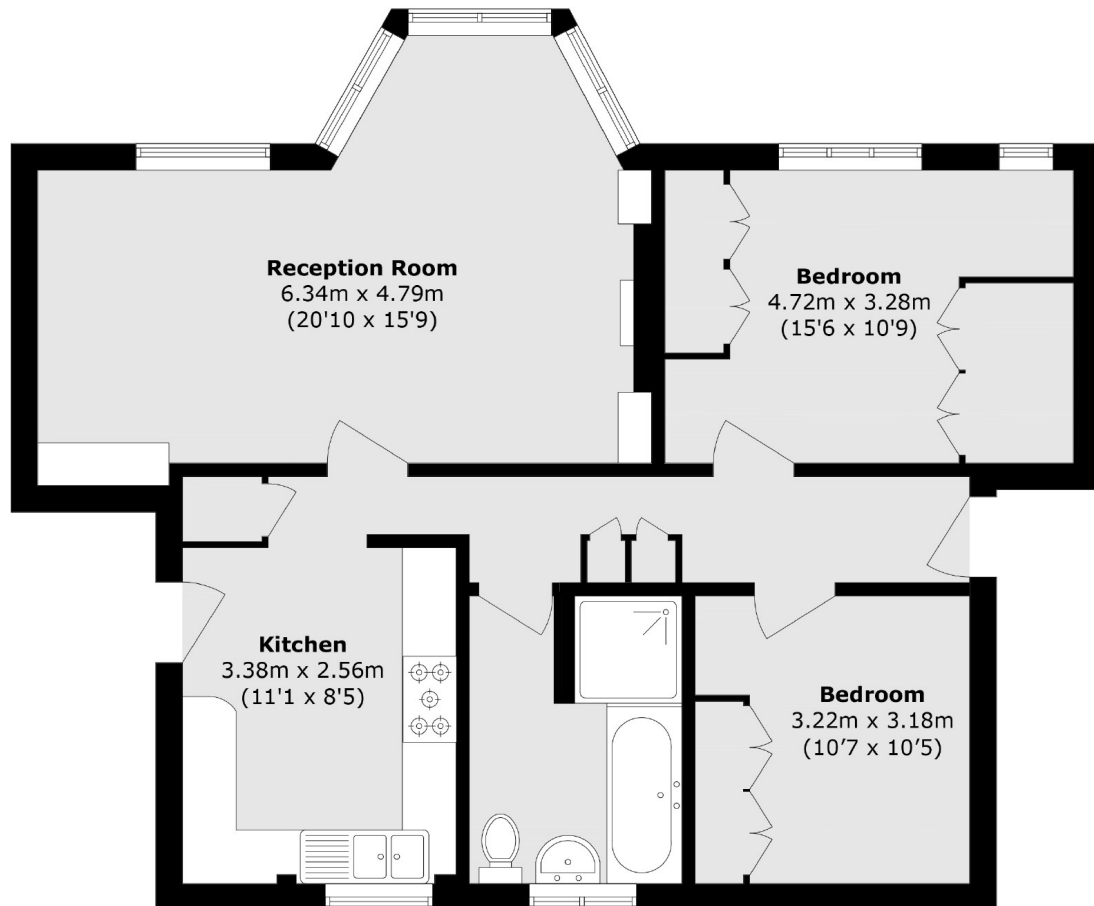
A spacious two bedroom apartment featuring a large reception room with dining area and a modern fitted kitchen. Both double bedrooms include built-in wardrobes, a stylish bathroom offering a bath, separate shower and built-in TV. Additional benefits include a private garage, providing secure parking and storage.

Park Road leads down to the banks of the River Thames and Richmond Bridge. Richmond Town centre with its popular shops and restaurants is within 0.5 miles and the fast over ground service at Richmond is 0.8 miles away.

### Features

- Beautifully Presented
- Spacious Reception & Dining
- Built-In Wardrobes
- Private Garage
- Modern Kitchen
- Unallocated Parking

# Park Road, East Twickenham, TW1



Total area (approx.): 83.6 sq. m (899.8 sq. ft)