



Chertsey Road, TW1

£1,550 Per calendar month

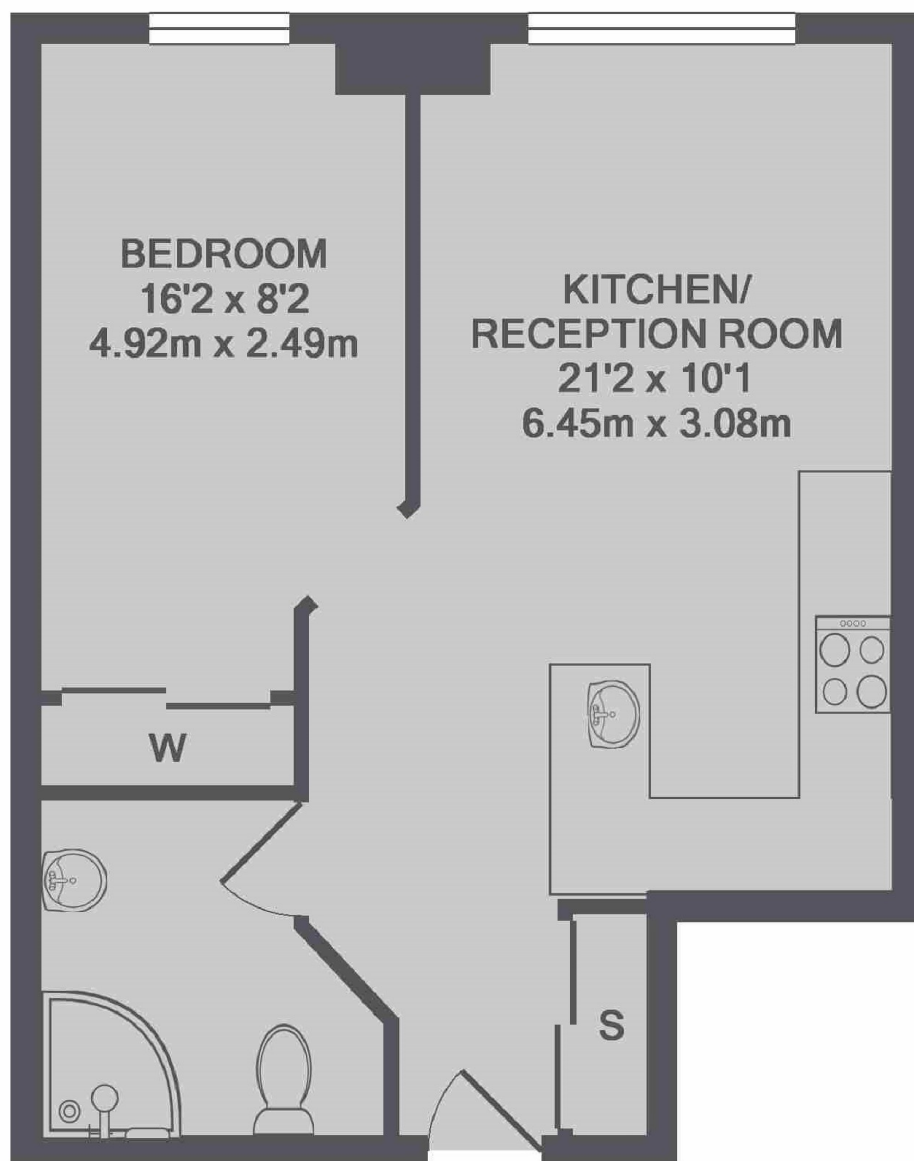
A first floor one bedroom flat situated in this Art-Deco Former Printing press. The property is in immaculate condition, there is an allocated off-street parking space, lift access and private secure storage unit.

Globe Central is exactly that. Close to St Margarets village with it's boutique shops and restaurants whilst in incredibly easy reach of St Margarets station and The River Thames.

Features

One Bedroom Apartment
High Specification
Lift Access
Air Conditioning
Allocated Parking
Furnished

Chertsey Road,
St Margarets, TW1



TOTAL APPROX. FLOOR AREA 414 SQ.FT. (38.5 SQ.M.)

Dexters

St Margarets
1 Chertsey Road
St Margarets
TW1 1LR
Lettings
020 8744 9700

Energy Rating: C. We aim to make our particulars both accurate and reliable. However they are not guaranteed; nor do they form part of an offer or contract. If you require clarification on any points then please contact us, especially if you're traveling some distance to view. Please note that appliances and heating systems have not been tested and therefore no warranties can be given as to their good working order.

 **RICS** | Regulated
Estate Agent
and Letting Agent

[dexters.co.uk](https://www.dexters.co.uk)