



Amyand Park Road, TW1

£550,000

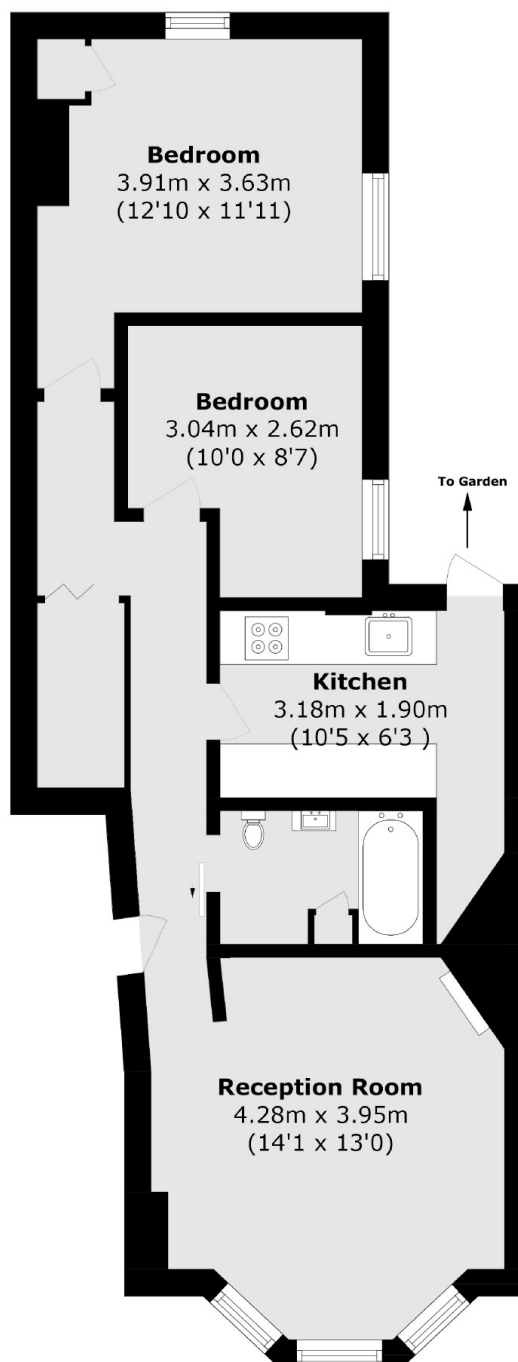
An immaculately presented two double bedroom garden flat, situated in a popular residential road in the heart of St Margarets village. The ground floor of this lovely Victorian home has been tastefully refurbished and should not be missed.

Located in Amyand Park Road, on the borders of St Margarets and Twickenham, this property is ideal for the busy commuter, with a choice of both St Margarets Train Station and Twickenham's fast line. Marble Hill Park, the River Thames and York House Gardens are also close by.

Features

- Two Bedrooms
- Private Rear Garden
- Beautifully Presented
- Village Location
- Victorian Conversion
- Ground Floor

Amyand Park Road, St Margarets, TW1



Total area (approx.): 56.7 sq. m (610.3 sq. ft)

Dexters

St Margarets
1 Chertsey Road
St Margarets
TW1 1LR
Sales
020 8744 9400

Energy Rating: C. We aim to make our particulars both accurate and reliable. However they are not guaranteed; nor do they form part of an offer or contract. If you require clarification on any points then please contact us, especially if you're traveling some distance to view. Please note that appliances and heating systems have not been tested and therefore no warranties can be given as to their good working order.

 **RICS** | Regulated
Estate Agent
and Letting Agent

[dexters.co.uk](https://www.dexters.co.uk)