



## Kenley Road, TW1

£699,950

Located in the heart of St Margarets village, is this beautifully presented first floor split-level two double bedroom maisonette. The property comes with a private garden and beautiful original features.

Kenley Road is a quiet residential road in the heart of St Margarets village. Within 0.2 miles of the mainline train station with its links into London Waterloo, shops and cafés of the village high street. Moor Mead Park and Marble Hill Park are also close by.

### Features

- Two Bedrooms
- Excellent Condition
- Central Location
- Low Charges
- Split-Level
- Private Garden





## Kenley Road, TW1

Enter on the ground floor via your own private front door, with stairs leading up to the first floor. To the rear of the property is a larger-than-average open-plan kitchen and dining area perfect for entertaining. This bright and spacious room provides direct access to a private garden, which also benefits from rear access ideal for bike storage. Also on this floor is a fully fitted family bathroom, a generous double bedroom and a separate living room.

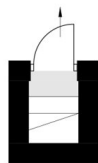
The loft has been thoughtfully converted to create a spacious principal bedroom with an en suite shower room.



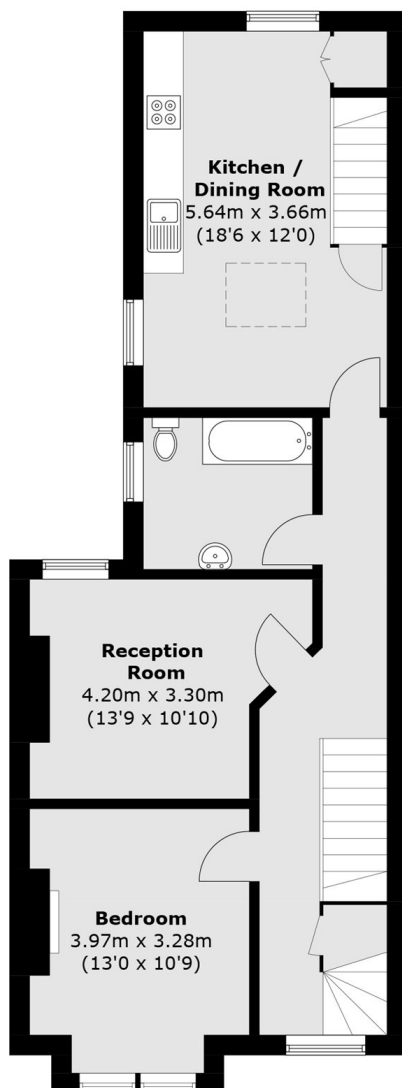


# Kenley Road, St Margarets, TW1

To Garden

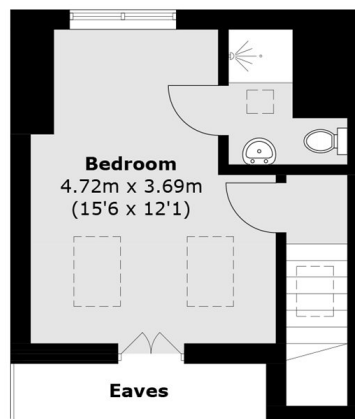


**Ground Floor**



**Ground Floor**

**First Floor**



**Second Floor**

Total area (approx.): 93.8 sq. m (1,009.5 sq. ft)  
(Excluding Eaves)

# Dexters

St Margarets  
1 Chertsey Road  
St Margarets  
TW1 1LR  
Sales  
020 8744 9400

Energy Rating: C. We aim to make our particulars both accurate and reliable. However they are not guaranteed; nor do they form part of an offer or contract. If you require clarification on any points then please contact us, especially if you're traveling some distance to view. Please note that appliances and heating systems have not been tested and therefore no warranties can be given as to their good working order.

**RICS** Regulated  
Estate Agent  
and Letting Agent

dexters.co.uk