

Union Lane, TW7

£259,950

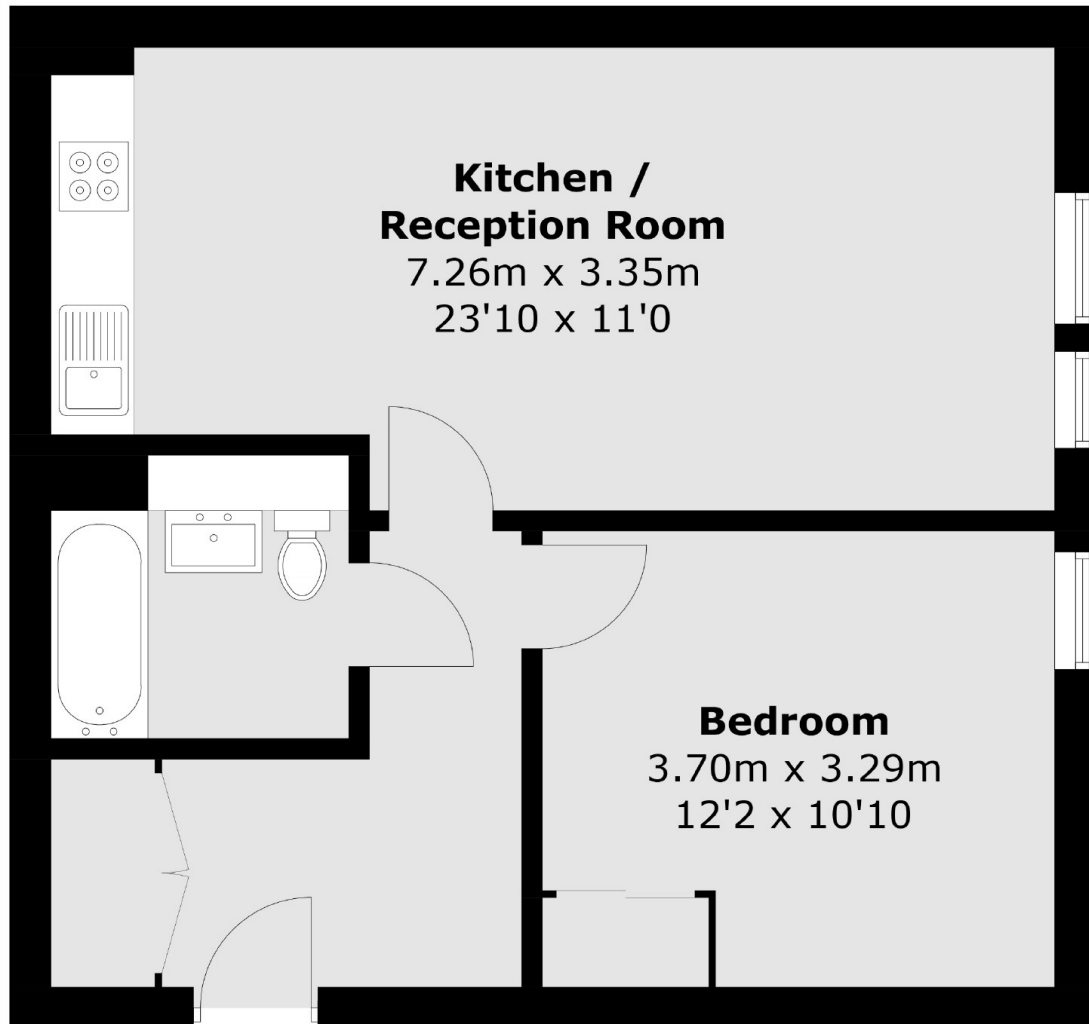
A beautifully presented one bedroom apartment ideally positioned at the quieter end of the development. The property is in immaculate condition, has a long lease and is offered to the market with no onward chain. This lift-serviced apartment has convenient allocated parking close to the entrance and is not to be missed.

Union Lane is an attractive development which is just a few hundred yards from the green expanses of Syon Park and the River Thames. Close to Syon Lane Station, several bus routes and the A4, it is ideal for commuting.

Features

Modern Development
Open Plan Reception
One Double Bedroom
Modern Bathroom
Fully Fitted Kitchen
Allocated Parking

Union Lane,
Isleworth, TW7



Total area (approx.): 49.4 sq. m (531.7 sq. ft)

Dexters

St Margarets
1 Chertsey Road
St Margarets
TW1 1LR
Sales
020 8744 9400

Energy Rating: C. We aim to make our particulars both accurate and reliable. However they are not guaranteed; nor do they form part of an offer or contract. If you require clarification on any points then please contact us, especially if you're traveling some distance to view. Please note that appliances and heating systems have not been tested and therefore no warranties can be given as to their good working order.

 **RICS** | Regulated
Estate Agent
and Letting Agent

[dexters.co.uk](https://www.dexters.co.uk)