



Winchester Road, TW1

£569,950

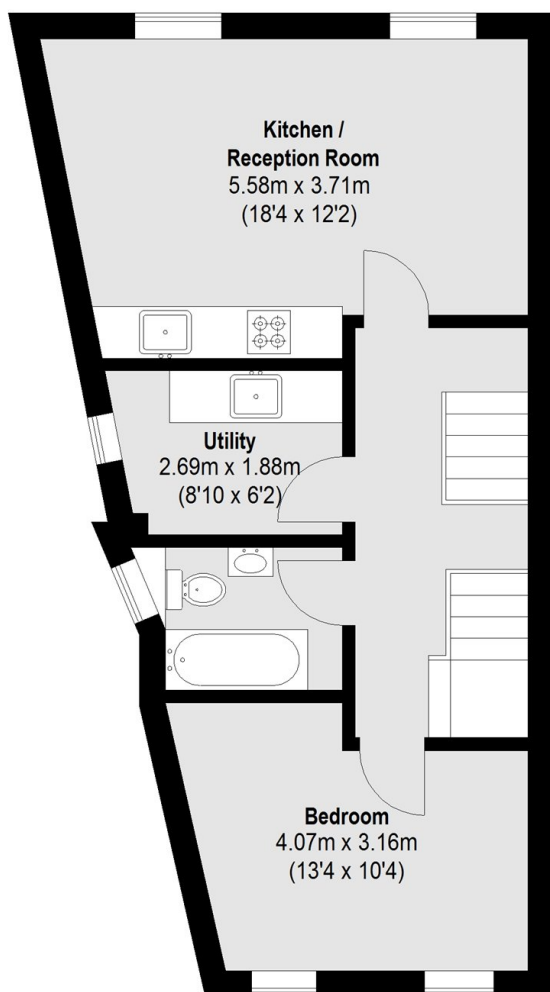
This stylish split-level maisonette is ideally located in the centre of St Margarets and benefits from a share of the freehold. Beautifully presented throughout, the property features two generous double bedrooms, a bright and spacious open-plan kitchen and living area, a contemporary bathroom and the added convenience of a separate utility room. Finished to an excellent standard, this home offers both style and practicality in a highly sought after location.

Winchester Road is a central road in the heart of St Margarets village. Sitting in a convenient spot, within 0.2 miles of the main line train station into London Waterloo, boutique shops and cafés. Moor Mead Park, Marble Hill Park and the River Thames are also close by.

Features

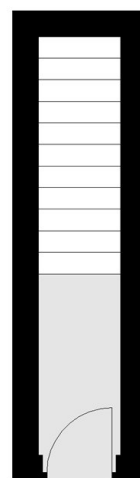
- Share Of Freehold
- Two Bedrooms
- Excellent Condition
- Central Location
- Utility Room
- First Floor

Winchester Road, St Margarets, TW1

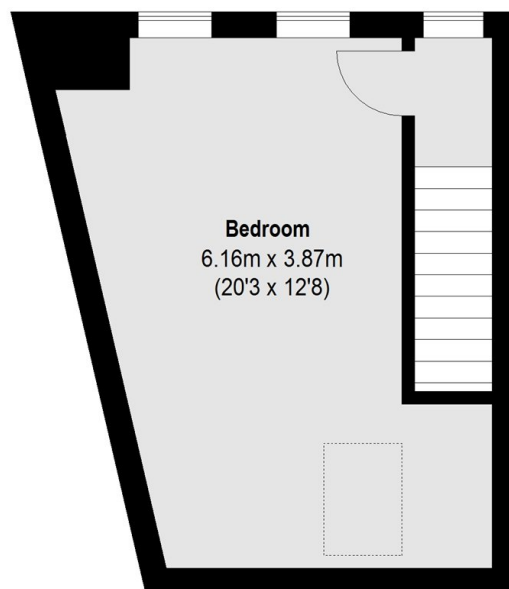


First Floor

Total area (approx.): 82 sq. m (882 Sq. ft)



Ground Floor



Second Floor