



Cambridge Park, TW1

£725,000

Situated within the highly sought-after Cambridge Park conservation area, this well-presented ground-floor apartment offers just under 1,000 sq ft of well-proportioned living space with direct access to beautifully maintained communal gardens.

Cambridge Park is an idyllic location, tucked away from East Twickenham high street but conveniently located near Marble Hill Park, bustling Richmond town centre, St Margarets village and station. It is excellently located for outstanding primary and secondary schools.

Features

- Communal Garden
- Share Of Freehold
- Three Bedrooms
- Excellent Location
- Ground Floor
- Well Presented



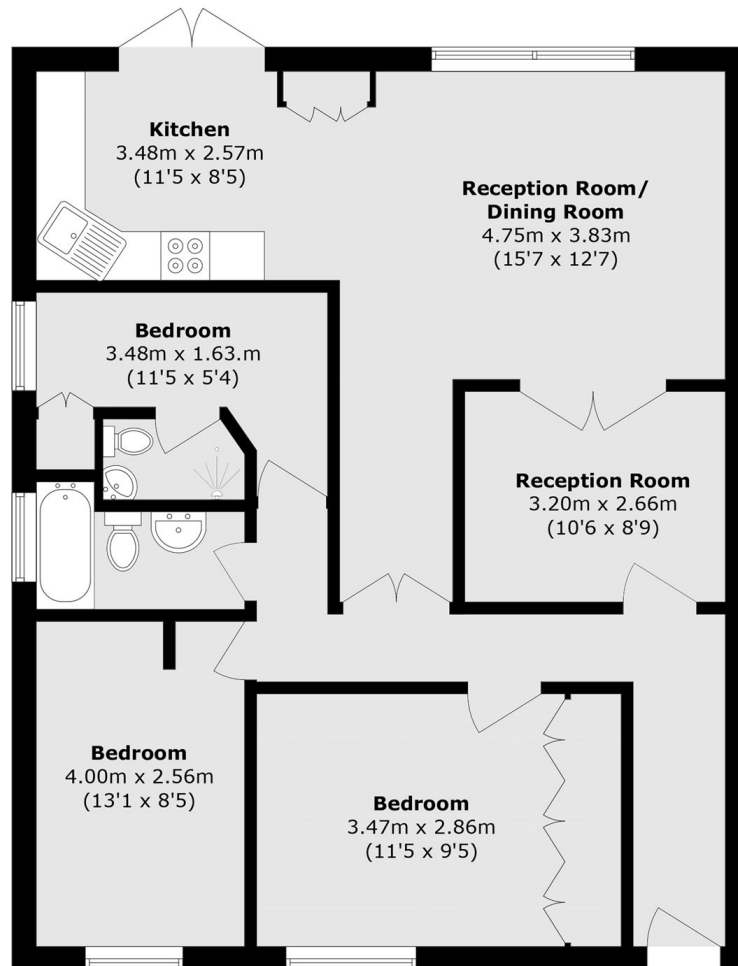
Cambridge Park, TW1

The accommodation comprises three bedrooms, one of which benefits from an en suite, in addition to a separate family bathroom. The layout offers flexible living arrangements, suitable for a range of buyers. A spacious reception room provides a bright and comfortable living space, with large windows allowing for excellent natural light and pleasant views over the communal gardens. The kitchen is well arranged with ample storage and worktop space, ideal for everyday living.

Further benefits include a share of the freehold, first-come, first-served off-street parking and access to a large well-maintained communal garden, mainly laid to lawn. The property is ideally located moments from the River Thames and surrounding parklands, within this desirable conservation area.



Cambridge Park, East Twickenham, TW1



Total area (approx.): 91.2 sq. m (981.6 sq. ft)

Dexters

St Margarets
1 Chertsey Road
St Margarets
TW1 1LR
Sales
020 8744 9400

Energy Rating: C. We aim to make our particulars both accurate and reliable. However they are not guaranteed; nor do they form part of an offer or contract. If you require clarification on any points then please contact us, especially if you're traveling some distance to view. Please note that appliances and heating systems have not been tested and therefore no warranties can be given as to their good working order.

 **RICS** | Regulated
Estate Agent
and Letting Agent

[dexters.co.uk](https://www.dexters.co.uk)