



South Street, TW7

£1,495 Per calendar month

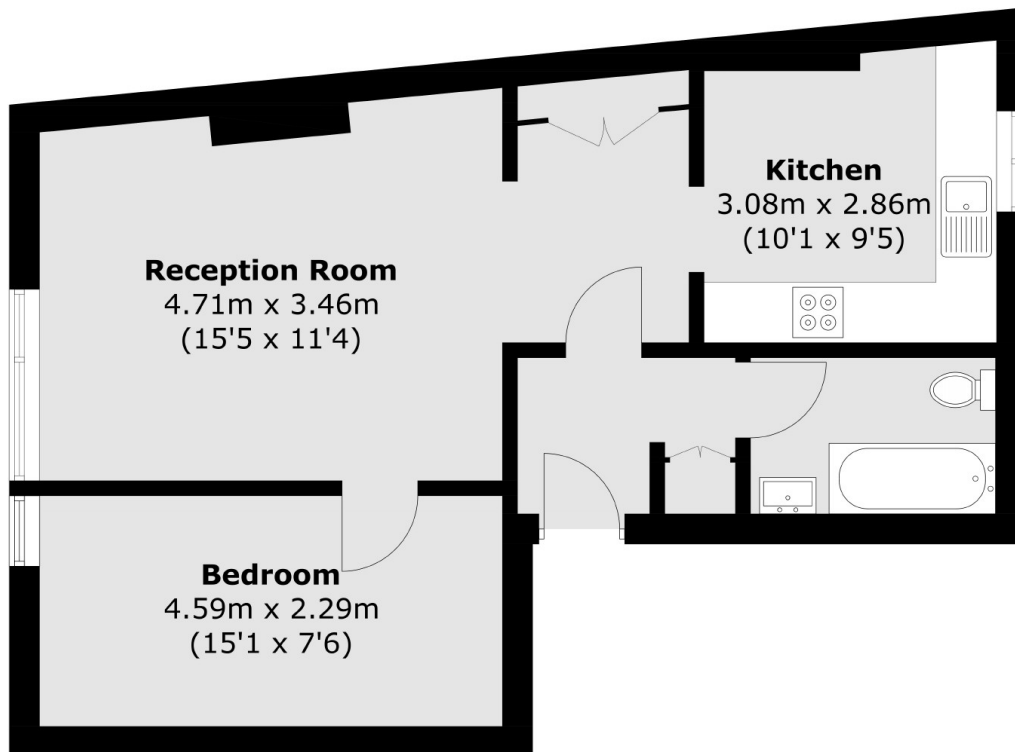
A beautifully presented one double bedroom flat in the heart of Isleworth. Exceptionally modern and stylish, this flat is perfect for a single occupant or couples first home.

South Street is in the heart of Old Isleworth, within a mile of Twickenham Station with its fast service into London Waterloo and within a hundred yards of the local amenities.

Features

- First Floor Flat
- Ample Storage
- Spacious Living Room
- Modern Kitchen
- Furnished
- Double Bedroom

South Street,
Isleworth, TW7



Total area (approx.): 50.1 sq. m (539.3 sq. ft)

Dexters

St Margarets
1 Chertsey Road
St Margarets
TW1 1LR
Lettings
020 8744 9700

Energy Rating: D. We aim to make our particulars both accurate and reliable. However they are not guaranteed; nor do they form part of an offer or contract. If you require clarification on any points then please contact us, especially if you're traveling some distance to view. Please note that appliances and heating systems have not been tested and therefore no warranties can be given as to their good working order.

 **RICS** | Regulated
Estate Agent
and Letting Agent

[dexters.co.uk](https://www.dexters.co.uk)