



## Riverdale Road, TW1

£2,595 Per calendar month

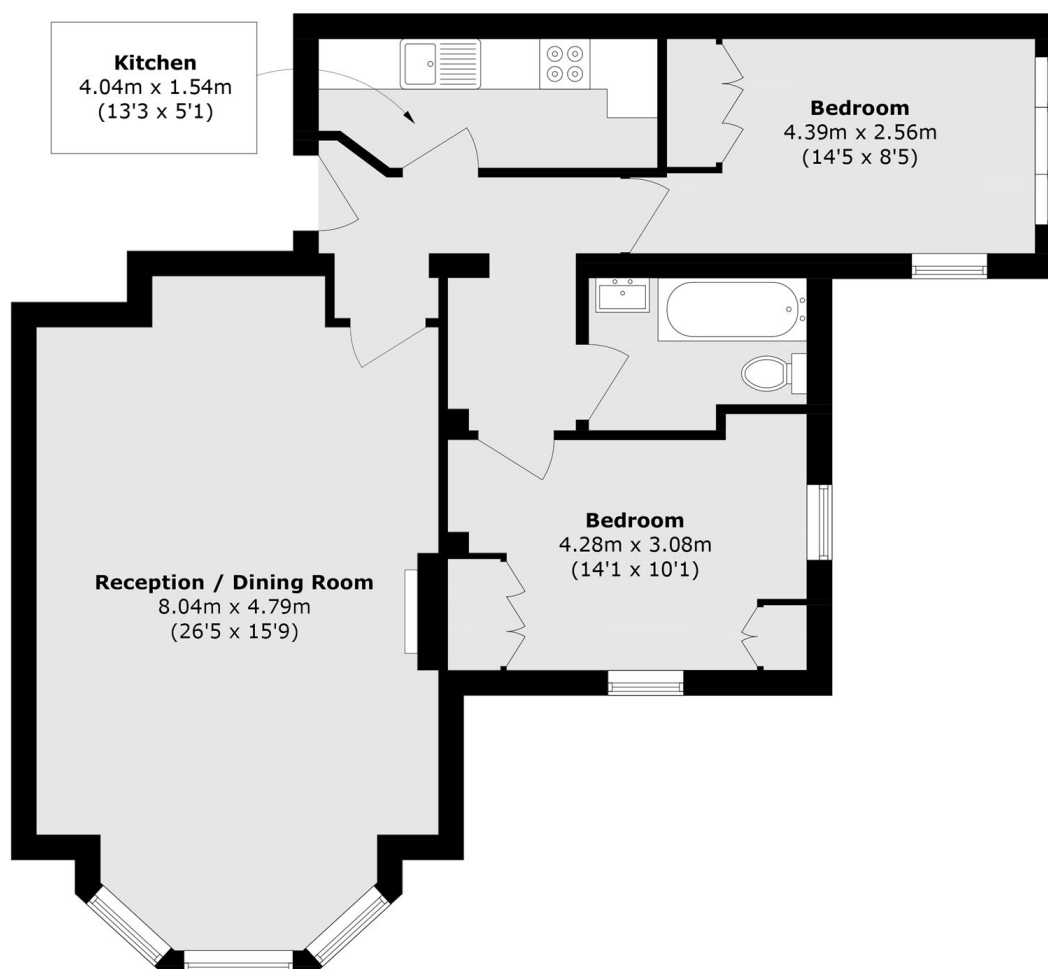
A beautifully presented two bedroom apartment, rich in character and period charm while having been thoughtfully updated and modernised throughout. The property retains a wealth of original features including ornate cornicing, a feature fireplace and impressive double-height ceilings in the formal reception room; creating a real sense of space. Both bedrooms are generous doubles and further benefits include direct access to landscaped communal gardens and off-street parking.

Riverdale Road is a picturesque, tree-lined residential street, characterised by an attractive collection of grand period buildings. Ideally positioned just moments from the River Thames, it offers a pleasant riverside walk leading directly into the heart of Richmond. Marble Hill Park and Old Deer Park are close by. As well as East Twickenhams high street with its shops, cafes and restaurants.

### Features

- Two Double Bedrooms
- Raised Ground Floor
- Direct Access to Gardens
- Feature Fireplace
- Parking Space
- Double-Height Ceilings

# Riverdale Road, Twickenham, TW1



Total area (approx.): 78.9 sq. m (849.2 sq. ft)