



**Haliburton Road, TW1**

**£1,350,000**

**Dexters**





## Haliburton Road, TW1

This charming four bedroom Victorian terraced home enjoys a rare position backing directly onto the picturesque River Crane. Rich in period features, the property offers generous and well-balanced living space arranged over three floors.

The ground floor benefits from a large double reception room with a feature fireplace, a guest WC and utility room. To the rear is an impressive open-plan kitchen and dining area is flooded with natural light from skylights running the length of the room, with a central island and ample storage, this bright and spacious room truly forms the heart of the home. We love the rear reception over looking the private garden. The first floor offers three well-proportioned bedrooms, two with fitted wardrobes, along with a stylish family bathroom. Occupying the entire second floor is the principal bedroom suite, complete with an en suite shower room. Outside, the large garden is mainly laid to lawn and backs directly onto the River Crane, providing a peaceful and green outlook.

Haliburton Road is a sought-after residential road in St Margarets, located within 0.5 miles of the River Thames. St Margarets village, with its shops, cafés and train station, is only 0.6 miles away. The area is particularly well suited to families looking to put down roots and take advantage of the excellent choice of local schools.

### Features

- Victorian Home
- Four Bedrooms
- Large Kitchen/Reception
- Two Bathrooms
- River Backing
- Large West Garden







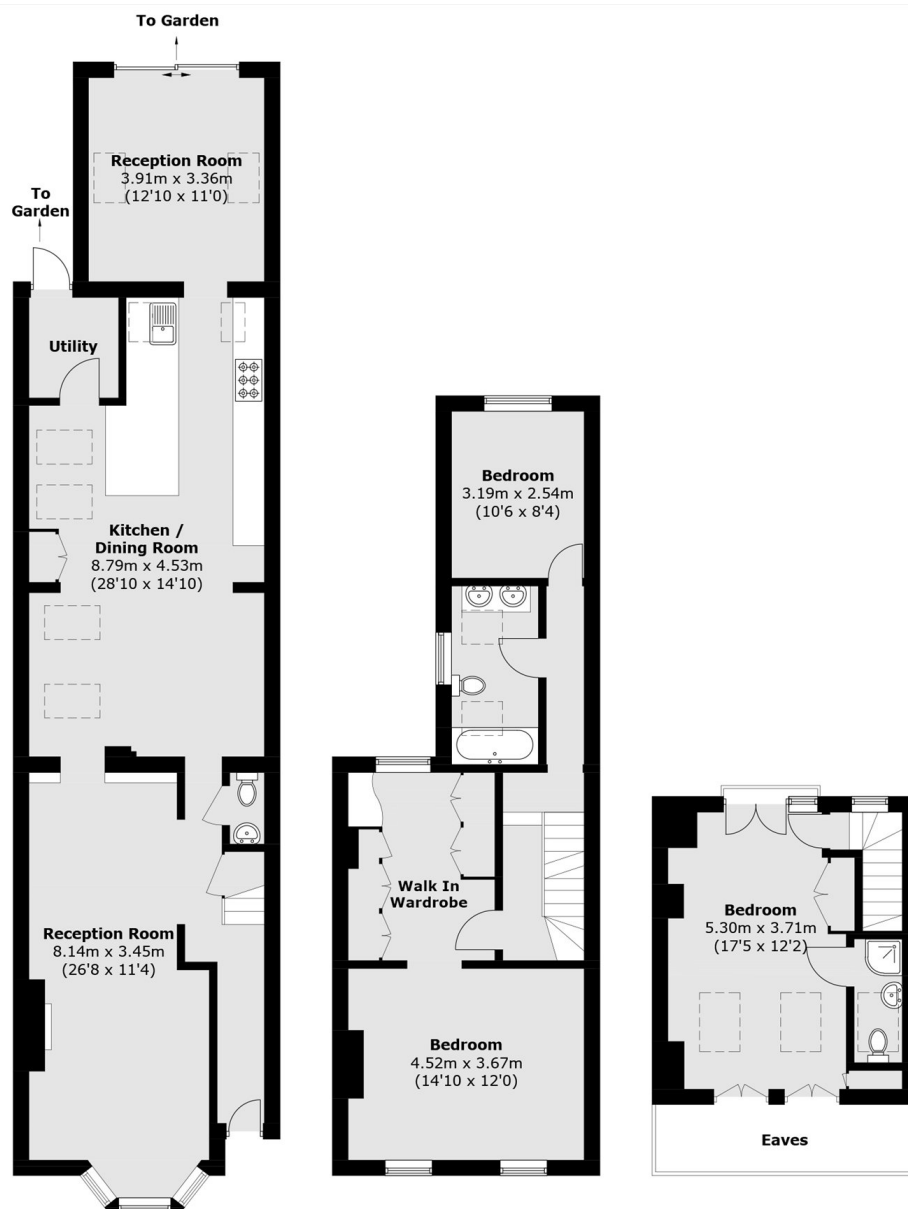








# Haliburton Road, St Margarets, TW1



**Ground Floor**

**First Floor**

**Second Floor**

Total area (approx.): 164.7 sq. m (1,772.8 sq. ft)  
(Excluding Eaves)