



Grosvenor Road, TW10

£475,000

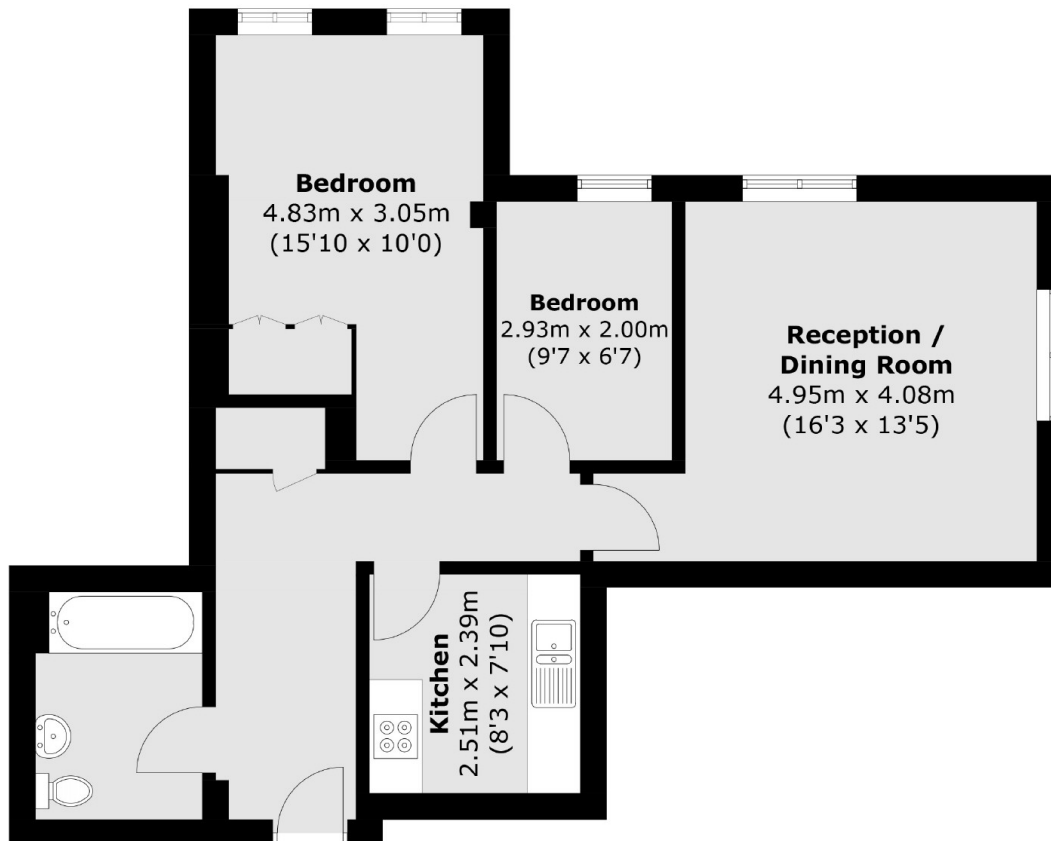
The prestigious Clearwater House, an over 55's residential development, was originally the Vineyard School and dates from 1867. This ground floor apartment offers 657 sq ft of accommodation, has a south west facing aspect and is offered to the market with a newly extended lease and no onward chain.

Situated on the corner of Grosvenor Road and The Vineyard in the heart of Richmond, the property is well located for the amenities of Richmond town centre, with Richmond Park, Richmond Riverside and Richmond Hill all close by. Richmond station offers services, to and from London, by tube or rail via the District line, South West trains and the London Overground service.

Features

- Two Double Bedrooms
- Spacious Reception Room
- Separate Kitchen
- Modern Bathroom
- Communal Gardens
- Residents' Parking

Grosvenor Road,
Richmond, TW10



Total area (approx.): 61.1 sq. m (657.7 sq. ft)