



Sheen Road, TW9

£575,000

This immaculate two-bedroom, top floor apartment offering a rare full-length west-facing balcony is located within the iconic Art Deco Grade II Listed Lichfield Court designed by George Bartram Carter gifting far-reaching views across Richmond, over to Kew Gardens, and beyond into London, a Miele Kitchen, state-of-the-art Daikin Climate Control (with air-filtration), and no onward chain.

Lichfield Court is ideal for all that Richmond has to offer being only a few minutes walk to Richmond Park, the River Thames, and Richmond Station (District line, London Overground Service and South Western train services). Additionally, Lichfield Court has its own direct access to The Quadrant.

Features

- Two Bedrooms
- Gated Community
- 24hr Concierge Service
- Secure Off-Street Parking
- Share of Freehold
- No Onward Chain



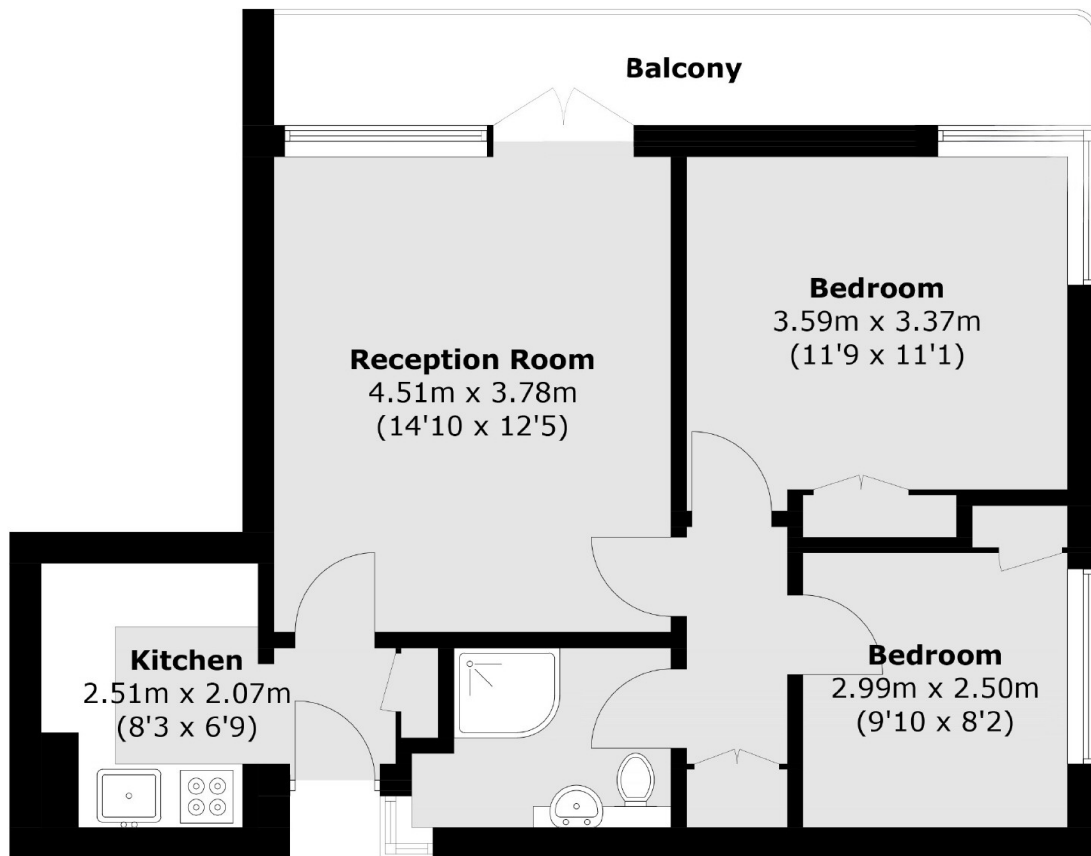
Sheen Road, TW9

The accommodation consists of an entrance hall with storage cupboard, a spacious reception room with glass double doors leading onto the large private balcony, a modern fitted kitchen with Miele appliances, a master double bedroom with built in wardrobes, a second double bedroom with built in wardrobe, storage cupboards in the inner hallway, and a modern family bathroom.

Lichfield Court encompasses well maintained gardens and landscaped seating areas for exclusive use by residents, as well as gated unallocated off-street parking - including several discount rate EV charging points. A separate private gated walkway provides residents fast pedestrian access to both Richmond Station and 'The Quadrant'.



Sheen Road, Richmond, TW9



Fourth Floor

Total area (approx.): 52.5 sq. m (565.1 sq. ft)
Balcony area : 8.1 sq. m (87.2 sq. ft)