



Shaftesbury Road, TW9

£4,495 Per calendar month

A rare opportunity to rent this 3 bedroom Victorian house close to Richmond Town Centre. This property has been stylishly decorated throughout, with two double bedrooms and third room in a self contained annexe with en-suite bathroom.

Shaftesbury Road is in a prime location in the Old Deer Park area of Richmond situated off the Kew Road with its charming café culture. The green spaces of Royal Botanic Gardens Kew and Old Deer Park are in the vicinity with Richmond town centre and Richmond Riverside close by.

Features

- Two Double Bedrooms
- Modern Kitchen/Dining Room
- Wood Burner
- Two Reception Rooms
- Two Bathrooms
- Patio Garden
- Annex/Outbuilding



Shaftesbury Road, TW9

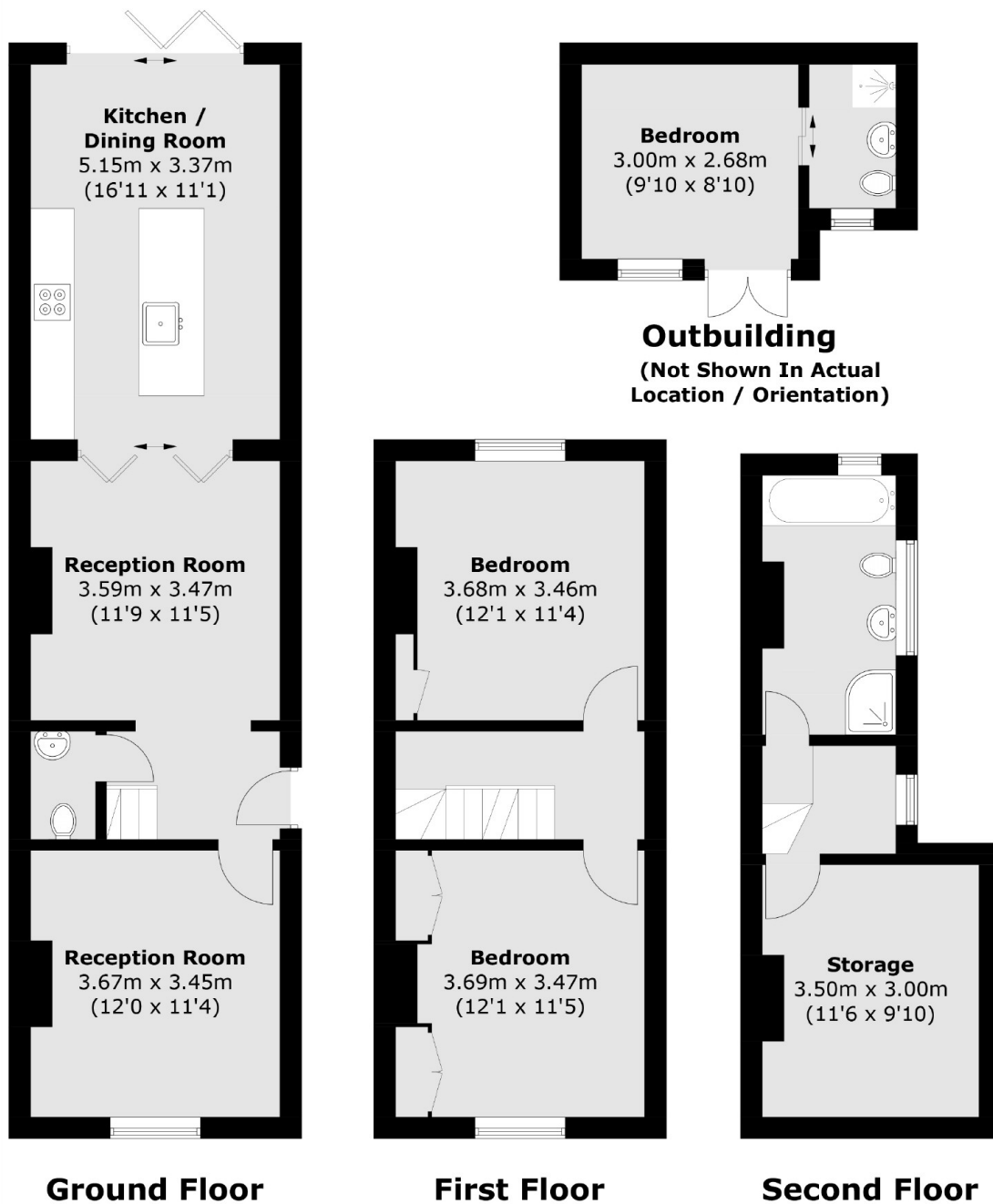
The ground floor accommodation consists of an cosy front reception room, downstairs WC and an open plan dining area with a wood burner leading on to the bright and modern fitted kitchen.

To the rear of the property there is a pretty patio garden and an additional self contained bedroom and en suite. The first floor consists of two well proportioned double bedrooms both with fitted storage and wooden floors.

To the top floor there is a modern bathroom with both bath and separate shower unit.



Shaftesbury Road, Richmond, TW9



Total area (approx.): 102.8 sq. m (1,106.5 sq. ft)
Outbuilding area (approx.): 11.0 sq. m (118.4 sq. ft)