



## Lonsdale Mews, TW9

£968,000

Offering approximately 1,019 sq ft of well-appointed living space, this generous three-bedroom mews house has been finished to an exceptional standard and is ready for immediate occupation. Ideally suited to those who wish to enjoy the abundant green spaces of Kew and Richmond, the property combines contemporary design with a calm, welcoming atmosphere.

Lonsdale Mews is in a prime location in the Kew Village area of Richmond. The green spaces of Royal Botanic Gardens Kew and Old Deer Park are in the vicinity with Richmond town centre and Richmond Riverside close by. Tube and rail services via the District Line, South West Trains are readily available from Richmond station.

### Features

Three Bedroom  
Modern Finish  
Mews House  
Light-well Patio  
Open Plan Layout  
Kew Village Location





## Lonsdale Mews, TW9

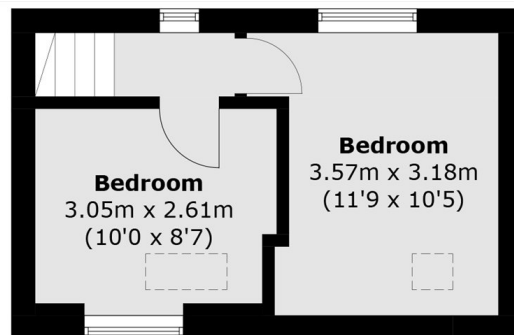
The ground floor is entered through a smart porch that opens into a beautifully updated open-plan living and dining area, thoughtfully designed to maximise both space and light. A separate, modern kitchen and a convenient downstairs WC complete this level. Two sets of bi-folding doors open out onto a charming light-well patio, creating a wonderful indoor-outdoor flow.

On the first floor, a bright landing, perfectly suited as a study or reading nook, benefits from striking floor-to-ceiling windows that flood the space with natural light. This level also hosts a well-proportioned double bedroom and a spacious, stylish family bathroom featuring integrated laundry facilities. Stairs rise to the second floor, where two further double bedrooms provide peaceful and versatile accommodation.

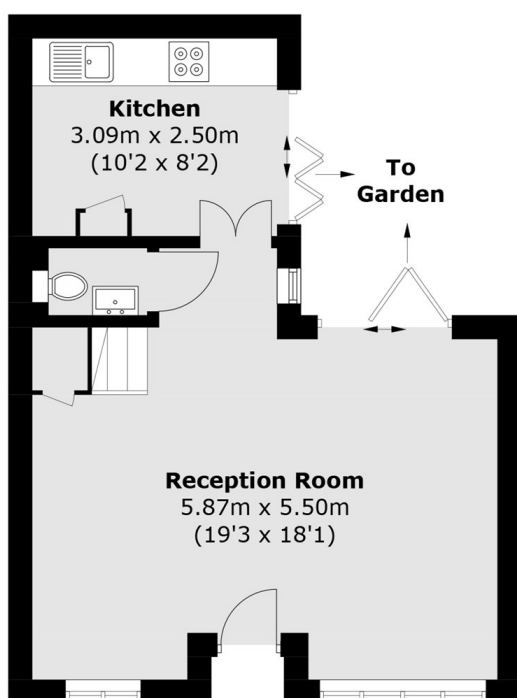




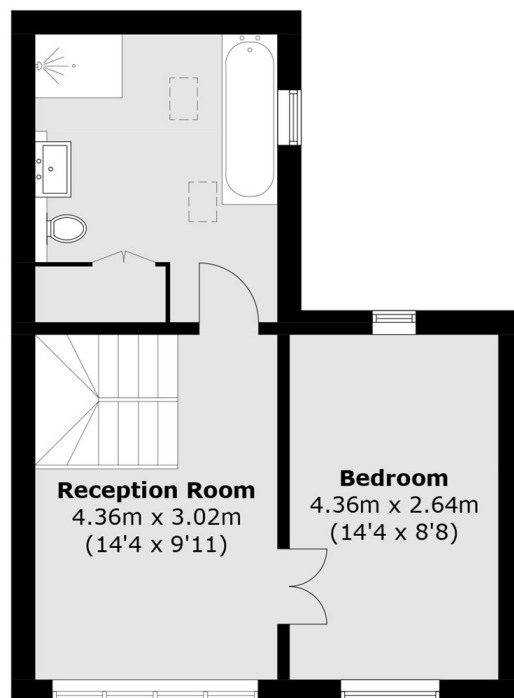
# Lonsdale Mews, Kew, TW9



**Second Floor**



**Ground Floor**



**First Floor**

Total area (approx.): 94.7 sq. m (1,019.3 sq. ft)