



Parkleys, TW10

£2,500 Per calendar month

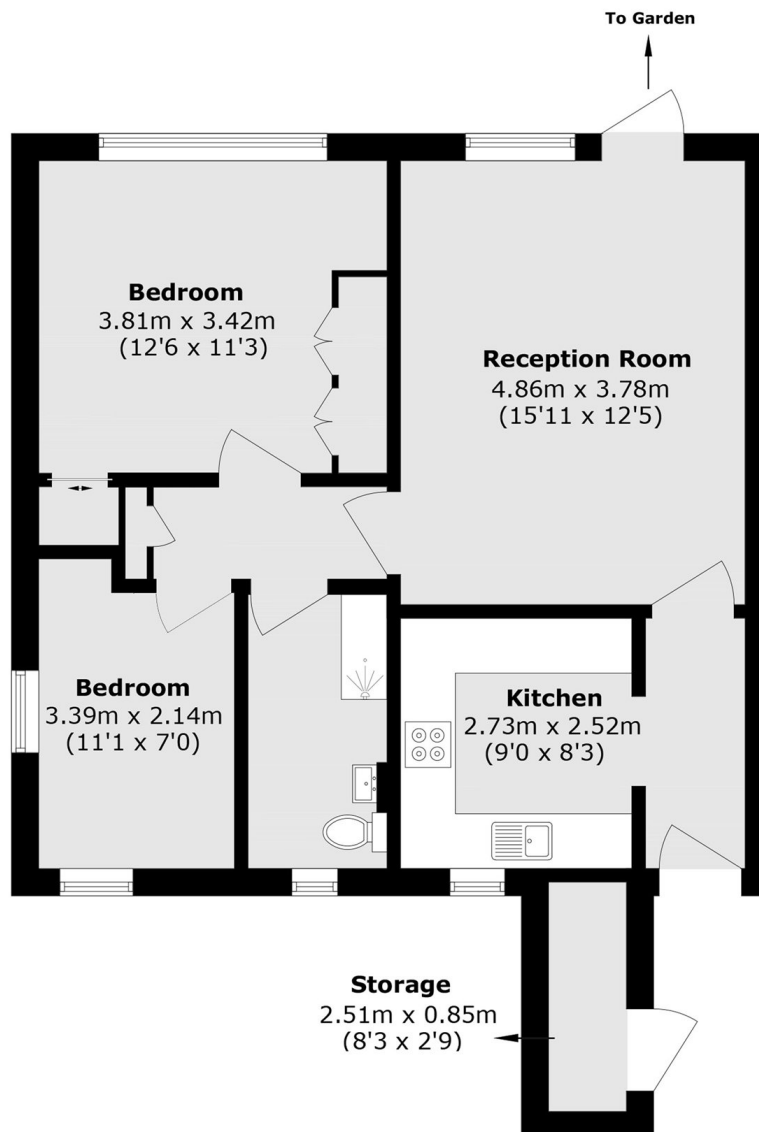
This ground floor apartment is presented in good condition throughout and comes with two bedrooms, living room, separate kitchen, bathroom and access to a patio leading to communal gardens. The property has lovely wood floors and plenty of natural light.

Parkleys is a popular development just off Ham parade and close to Ham common.

Features

- Close to Ham Common
- Close to Amenities
- Communal Gardens
- Two Bedrooms
- Good Condition
- Ground Floor

Parkleys, Richmond, TW10



Total area (approx.): 59.9 sq. m (644.7 sq. ft)

External Storage area (approx.): 2.1 sq. m (22.6 sq. ft)