



Church Walk, TW9

£3,195 Per calendar month

This rarely available two double bedroom Victorian cottage in central Richmond offers modern kitchen a spacious living area and patio garden.

Church Walk is a quiet location opposite St Mary Magdalene Church. The pedestrian lane runs through the heart of Richmond town centre with its many shops, cafes and restaurants.

Features

- Two Bedrooms
- Victorian Cottage
- Modern Kitchen
- Spacious Living Area
- Central Richmond
- Patio Garden



Church Walk, TW9

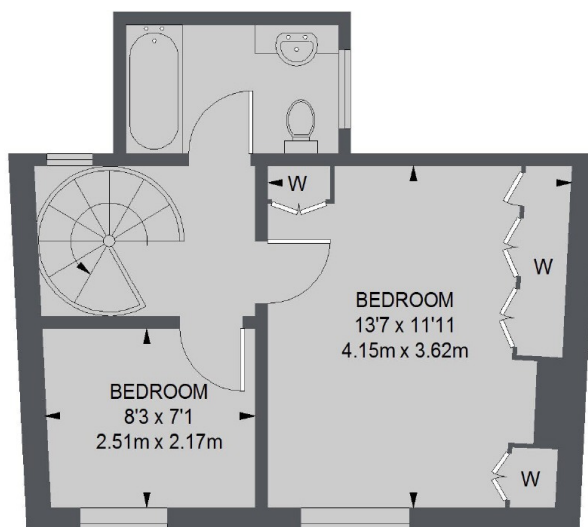
The ground floor accommodation comprises an open-plan spacious reception room with a feature fireplace and wooden flooring leading to a kitchen/dining room which benefits from an abundance of natural light and leads directly to the courtyard rear garden.

The first floor accommodation comprises a landing, a master double bedroom with built-in wardrobes, a second bedroom and a modern family bathroom. There is also a part boarded loft, accessed via a hatch with pull down ladder.

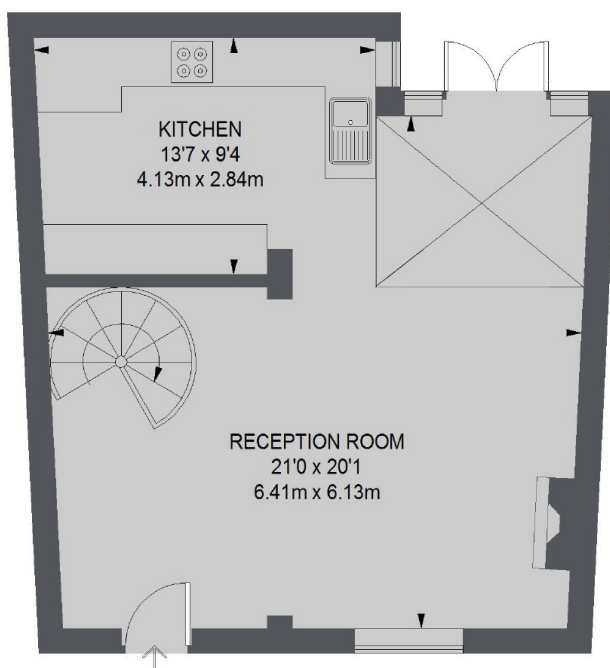
Church Walk is ideally located for Richmond's extensive leisure, shopping and travel amenities including boutique and high street shops, restaurants and independent coffee shops.



Church Walk, Richmond, TW9



FIRST FLOOR



GROUND FLOOR

TOTAL APPROX. FLOOR AREA 789 SQ. FT. (73.34 SQ. M.)

Dexters

Richmond
1 Sheen Road
Richmond
TW9 1AD
Lettings
020 8288 0828

Energy Rating: C. We aim to make our particulars both accurate and reliable. However they are not guaranteed; nor do they form part of an offer or contract. If you require clarification on any points then please contact us, especially if you're traveling some distance to view. Please note that appliances and heating systems have not been tested and therefore no warranties can be given as to their good working order.

 **RICS** | Regulated
Estate Agent
and Letting Agent

[dexters.co.uk](https://www.dexters.co.uk)