



## Thompson Avenue, TW9

£1,280,000

Offering an impressive total 1,351 sq ft of well-proportioned living space, this beautifully presented end-of-terrace home provides generous accommodation arranged over three thoughtfully designed floors. Finished to a high standard throughout, the property offers both comfort and versatility, making it an ideal family home.

Thompson Avenue is ideally located for Richmond Park and Royal Botanic Gardens Kew. The commuter is equally well catered for with Richmond, Kew Gardens and North Sheen stations close to hand with additional excellent bus services to Central London.

### Features

- Three Double Bedrooms
- Two Bathrooms
- Two Reception Rooms
- Open Plan Kitchen/Diner
- Large Private Garden
- End Of Terrace





## Thompson Avenue, TW9

The ground floor accommodation consists of a porch leading through to the entrance hall with downstairs WC, a cosy front reception room, a separate utility room, and an impressive open plan second reception room come dining room come kitchen with an additional utility room. With bi-fold doors leading out to the rear garden and external office room.

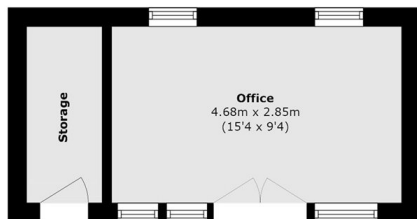
On the first floor, a landing leads to a spacious double bedroom with built-in wardrobes, a second smaller double bedroom, and a contemporary family bathroom. The second floor is dedicated to the master suite, which includes an en-suite bathroom, built-in wardrobes, and a cleverly designed eaves area currently used as a dressing space.

Externally, the property boasts a generous private rear garden with lawn and decking, ideal for relaxing or entertaining, as well as the external office room. A side gate provides convenient access to the front of the property, and the rear garden enjoys uninterrupted, peaceful views over the tree-lined North Sheen Cemetery. To the front, a charming garden entrance is adorned with Victorian-style tiles and gravel, creating a welcoming first impression.

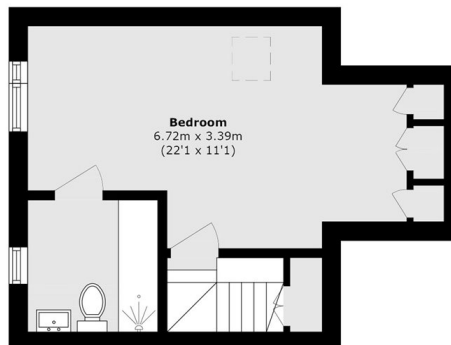




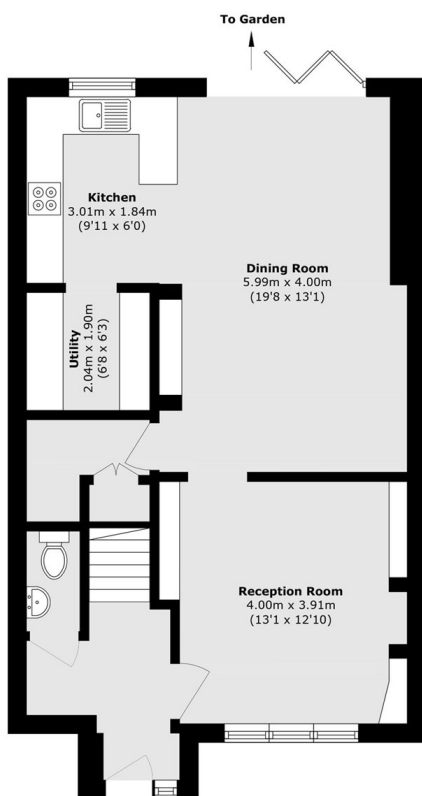
# Thompson Avenue, Kew, TW9



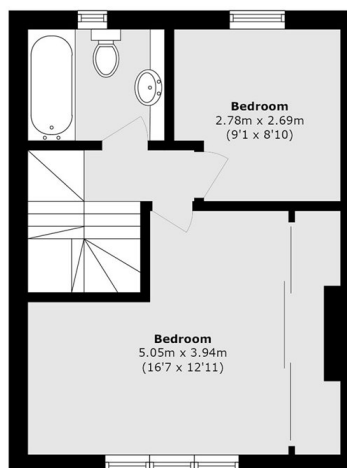
Ground Floor



Second Floor



Ground Floor



First Floor

Total area (approx.): 108.4 sq. m (1166.8 sq. ft)  
(Excluding Outbuilding)  
Outbuilding: 17.2 sq. m (185.1 sq. ft)