



Butler Farm Close, TW10

£2,750 Per calendar month

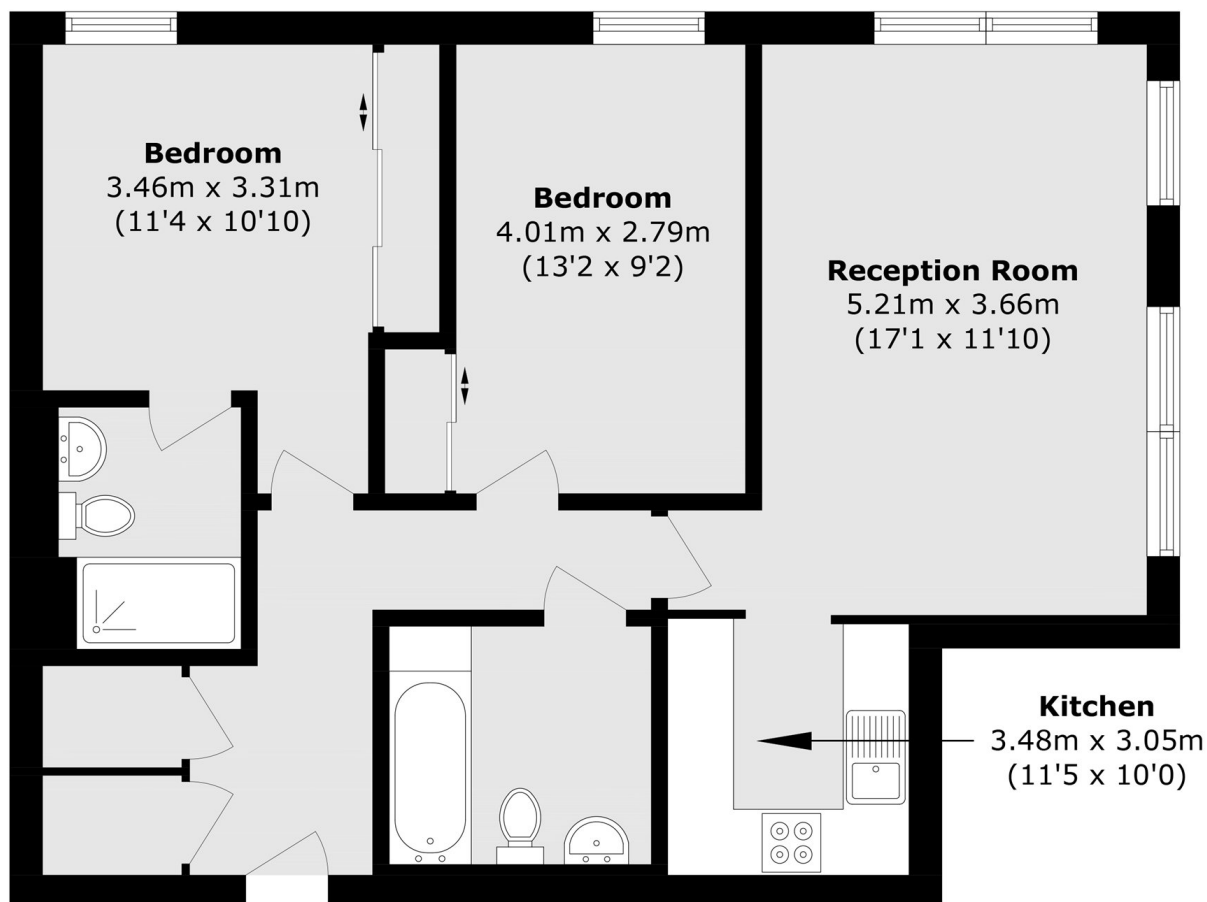
Modern two bedroom apartment with private parking in a popular development near Ham Common. The property is presented in good condition throughout and has two bedrooms, two bathrooms (including one en-suite), living room and separate kitchen.

Butler Farm Close is a private development near Ham Common, situated between Richmond and Kingston.

Features

- Private Parking
- Two Bedrooms
- Wood Floors
- Separate Kitchen
- Near to Ham Common
- Two Bathrooms

Butler Farm Close, Richmond, TW10



Total area (approx.): 71.1 sq. m (765.3 sq. ft)