



Garden Road, TW9

£375,000

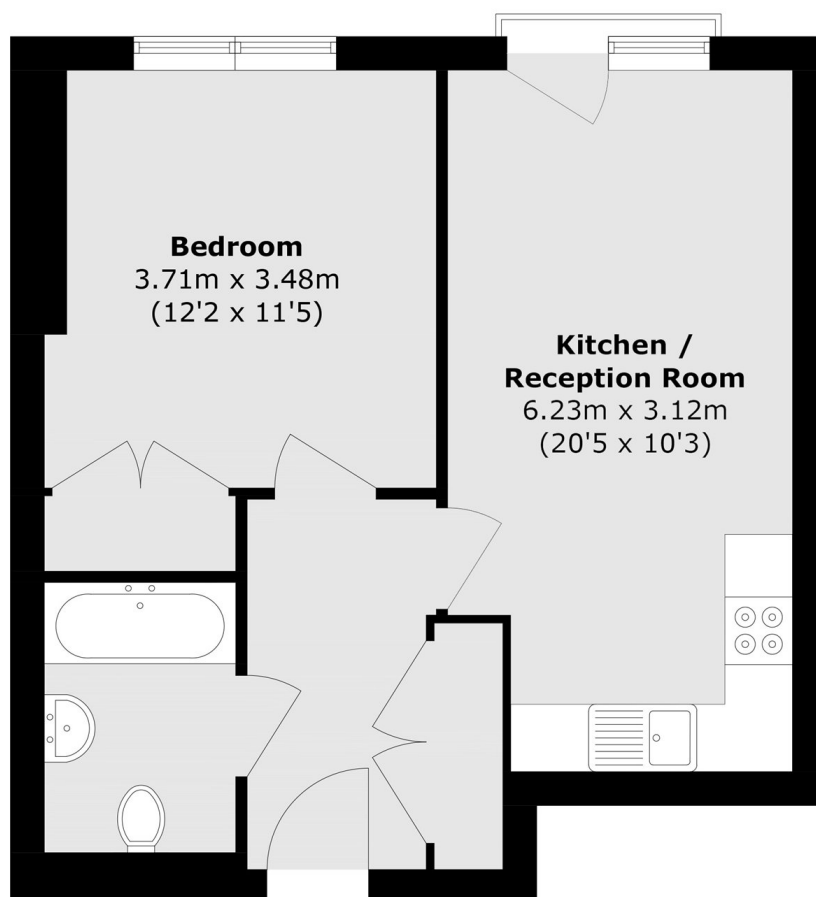
A well-presented, purpose-built second-floor apartment offering approximately 483 sq ft of thoughtfully arranged accommodation. The property is ideally positioned for commuters, with excellent transport links into Central London via the District Line, South Western Railway, and the London Overground, all readily accessible from Richmond and North Sheen stations.

Garden Road provides great access to the town centre of Richmond where a plethora of fine restaurants and eateries can be found amongst a vast array of shops, outstanding transport links, the River Thames, Richmond Green and Richmond Park whilst also being conveniently situated beside the Royal Botanic Gardens, Kew and the Old Deer Park area.

Features

- One Bedroom
- Fitted Kitchen
- Spacious Bathroom
- No Onward Chain
- Secure Allocated Parking
- Lift

Garden Road, Richmond, TW9



Total area (approx.): 44.9 sq. m (483.3 sq. ft)