



Lenton Rise, TW9

£3,750 Per calendar month

Four bedroom townhouse spread over three floors with a stunning kitchen, open plan to dining area and doors leading onto a pretty garden. On the first floor there is a large and bright reception room with high ceilings and Juliette balcony.

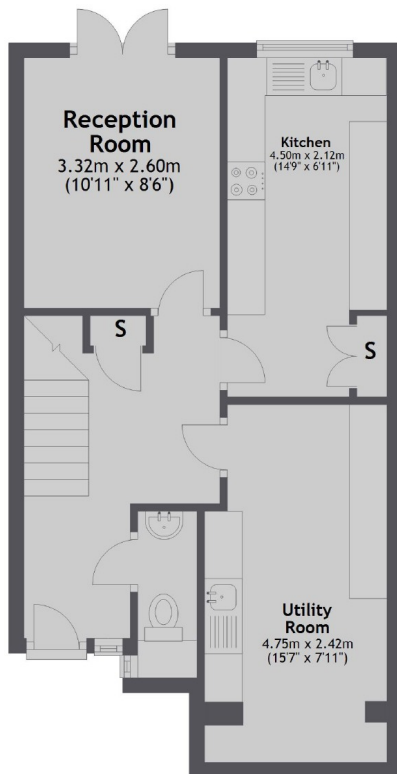
Located moments from the lovely shops, cafes and restaurants on Kew Road and a short distance from Richmond town centre and mainline train station.

Features

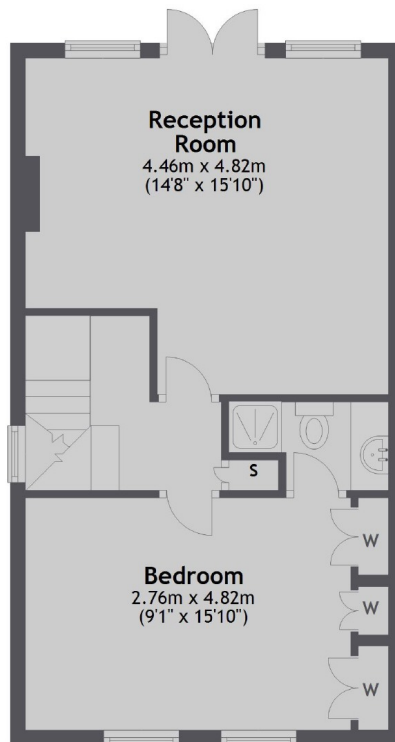
- Four Bedrooms
- Off Street Parking
- Garden
- Two Bathrooms
- Garage
- Great Location

Lenton Rise, Richmond, TW9

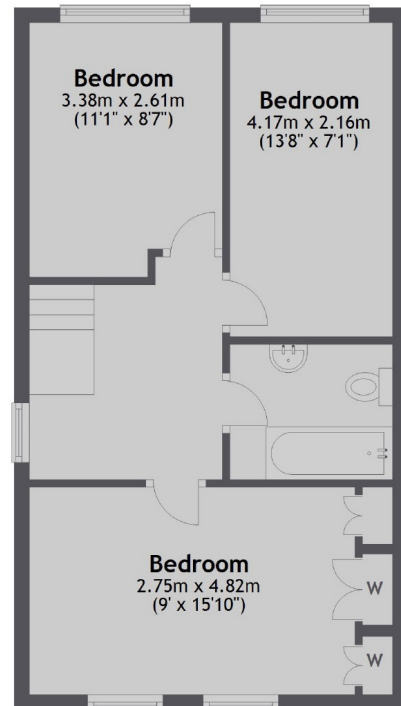
Ground Floor



First Floor



Second Floor



Total area: approx. 127.7 sq. metres (1374.7 sq. feet)