



## Lower Mortlake Road, TW9

£2,500 Per calendar month

Enjoy the Victorian charm and character of this delightful three bedroom house which has been extended to the ground floor and is just moments from central Richmond and train station.

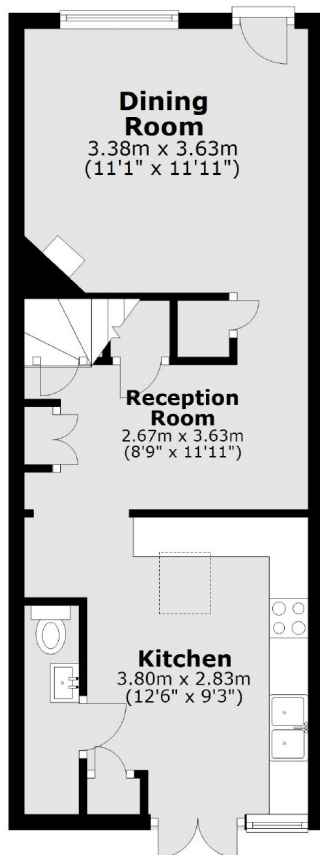
Close to central Richmond with it's array of shops, eateries and two theatres plus Richmond train station with it's fast train into London, Waterloo, District Line and South West Trains.

### Features

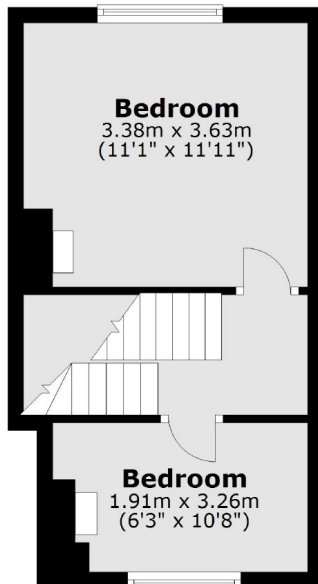
- Three Bedrooms
- Central Richmond
- Two Reception Rooms
- Modern Bathroom
- 'Countryside' Kitchen
- Garden

# Lower Mortlake Road, Richmond, TW9

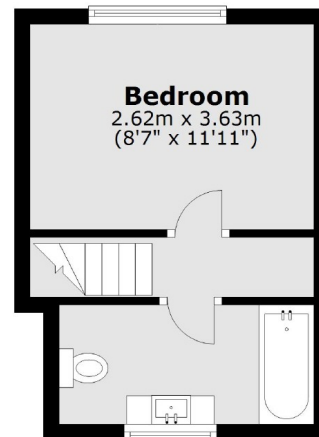
**Ground Floor**



**First Floor**



**Second Floor**



Total area: approx. 78.5 sq. metres (844.5 sq. feet)