



## Queens Road, TW10

£2,500 Per calendar month

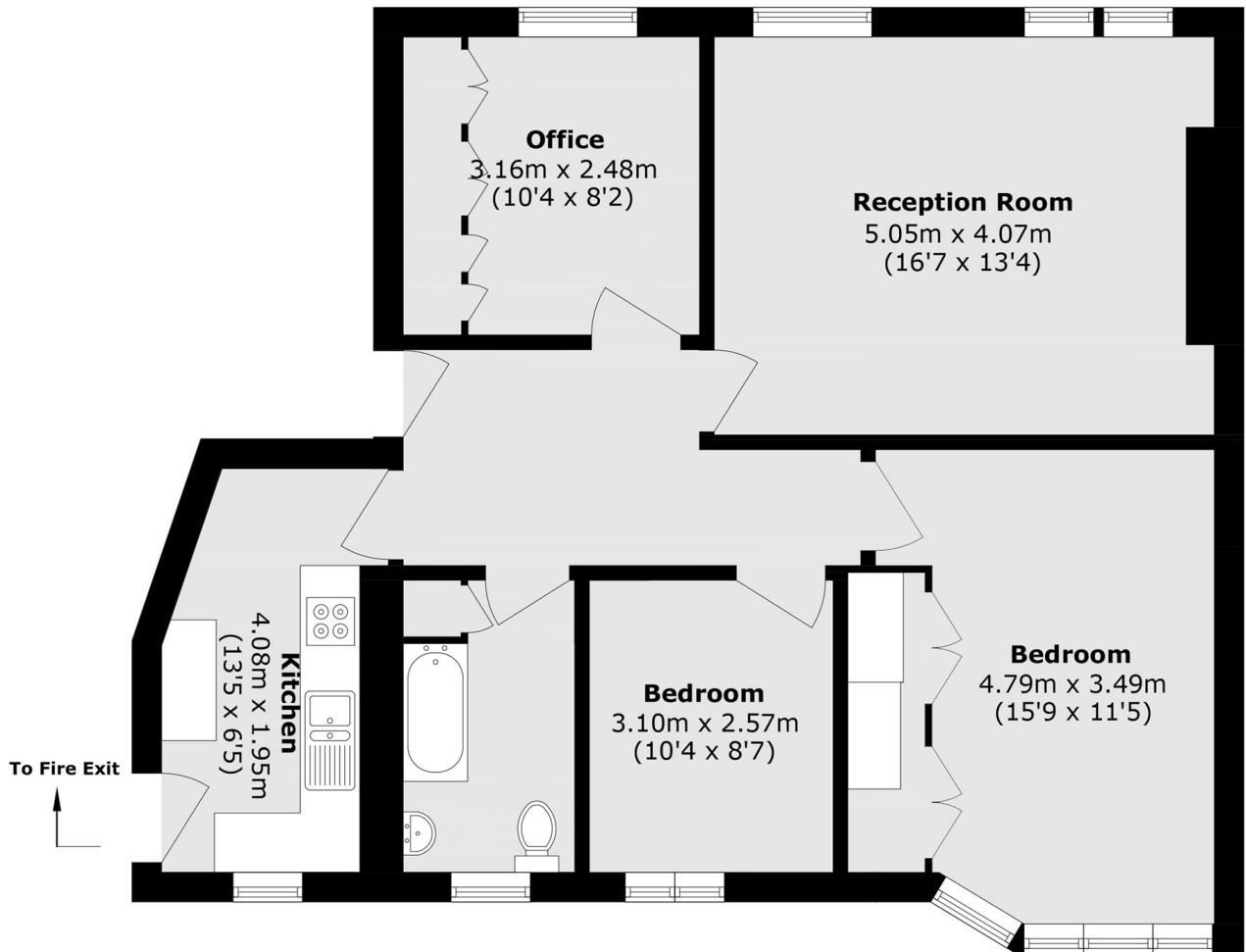
A stylish three bedroom apartment within Queens Court. With a large reception room, large bedrooms and ample storage throughout. This property is also in the catchment for outstanding schools.

Queens Court is on the prestigious Queens Road and just moments from Richmond Park and all the great shops and pubs and restaurants on Richmond Village.

### Features

- Three Double Bedrooms
- Large Reception Room
- Top Floor Flat
- Lift & Entry System
- Ample Storage
- Communal Garden

# Queens Road, Richmond, TW10



Total area (approx.): 79.7 sq. m (857.8 sq. ft)