



## Sheen Road, TW9

### £300,000

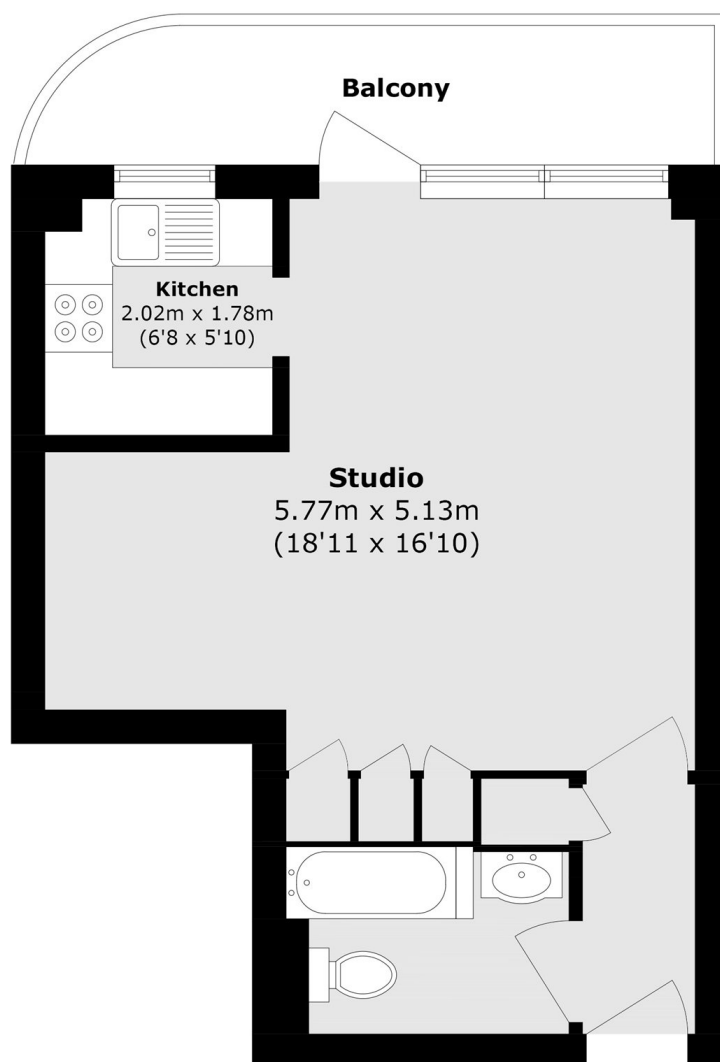
A bright studio apartment ideally located in the heart of central Richmond, just moments from the High Street shops and Richmond Station, providing excellent transport links into London and beyond. Lichfield Court encompasses well maintained gardens and landscaped seating areas for exclusive use by residents, as well as gated unallocated off-street parking - including several discount rate EV charging points.

Lichfield Court is ideal for all that Richmond has to offer being only a few minutes walk to Richmond Park, the River Thames, and Richmond Station (District line, London Overground Service and South Western train services). Additionally, a separate private gated walkway provides residents fast pedestrian access to both Richmond Station and 'The Quadrant'.

### Features

- Studio Apartment
- No Onward Chain
- Central Location
- 24hr Concierge Service
- Share of Freehold
- Secure Off-Street Parking

# Sheen Road, Richmond, TW9



Total area (approx.): 36.6 sq. m (393.9 sq. ft)  
Balcony area (approx.): 7.1 sq. m (76.4 sq. ft)