



Temple Road, TW9

£4,000 Per calendar month

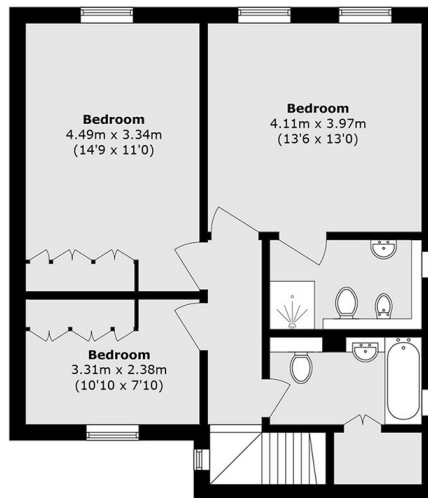
Spacious three bedroom end of terrace house arranged over two floors offers, open plan reception/ dining room, two modern bathrooms, a patio garden and garage.

Temple Road is a quiet, sought-after residential street conveniently located for excellent transport links, with both North Sheen and Kew Gardens stations nearby, providing quick access into central London. The vibrant amenities of Kew Village including independent shops, cafés, restaurants, and green open spaces are all within easy reach.

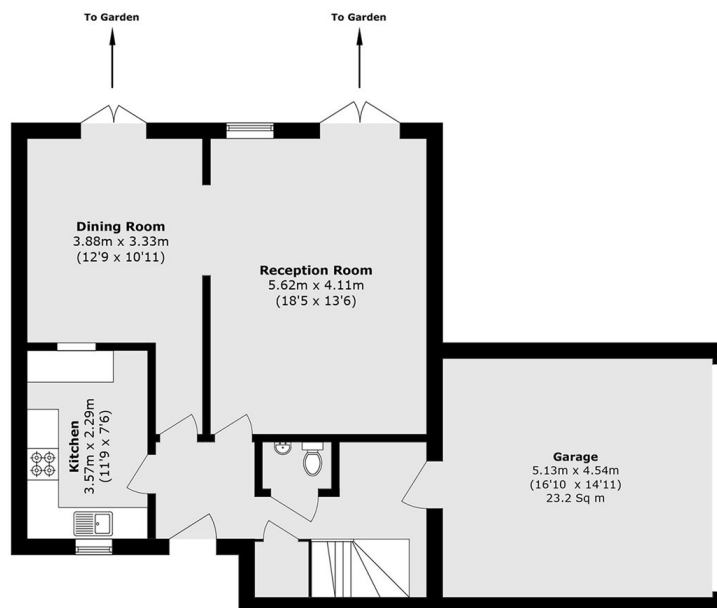
Features

- Three Bedrooms
- Terrace House
- Open Plan Living Space
- Modern Bathrooms
- Patio Garden
- Garage

Temple Road, Kew, TW9



Ground Floor



Ground Floor

Total area (approx.): 123.4 sq. m (1328.3 sq. ft)
Garage area (approx.): 23.3 sq. m (250.8 sq. ft)